



CHARTwell
**SCARLETT
HEIGHTS**
retirement residence



making people's lives BETTER[®]



Enjoy **convenience, flexibility** and **peace of mind** for a fulfilling retirement in Etobicoke.

PART OF OUR COMMUNITY SINCE 2007

Nestled along Eglinton Avenue West, Chartwell Scarlett Heights is an inviting retirement community offering a social and supportive lifestyle. Our safe and enviable neighbourhood in Humber Valley Village provides many unique opportunities for you to remain active and engaged in our surrounding community. Within close walking distance is an abundance of local shopping, restaurants, bakeries, pizzerias and places of worship—meaning you

can run errands with ease and enjoy a nice meal or coffee out with family and friends without the need to venture far.

Here, you will find yourself taking in breathtaking views of serene parkland, lush trees and blooming gardens from your spacious studio, one- or two-bedroom suite—all featuring large windows— as well as urban vistas of the City of Toronto.

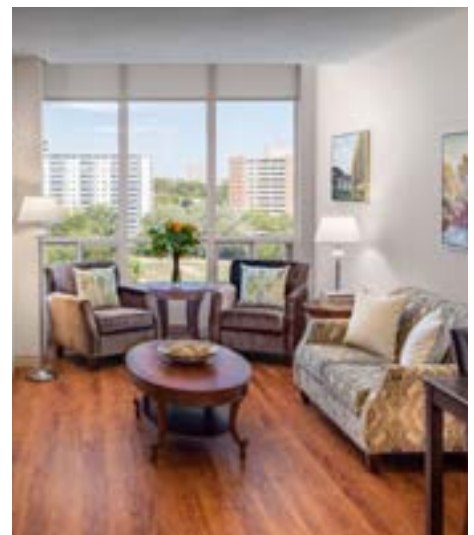
OUR UNIQUE LIFESTYLE

Our vibrant community of residents love to spend time socializing and enjoying everything our lifestyle has to offer. We have a variety of on-site amenities that empower you to pursue your passions or spend your day how you please. When you aren't relaxing in the privacy of your suite, you may find yourself at our lively bistro, fitness centre, theatre room, heated pool, spa, salon, library, outdoor patio or general store.

Many people also call us home because we offer multiple levels of care and support under one roof, including independent supportive living suites and a dedicated Memory Living neighbourhood. Our continuum of care residence means you can comfortably age in place if your unique needs change over time.

More than anything else, it's our caring and professional staff who make our home a wonderful place to live, as they're committed to providing personalized service that caters to your unique lifestyle.

Explore our Living at Chartwell brochure to learn more about dining, lifestyle activities and personalized care services.



FACTS & FEATURES



IN THE NEIGHBOURHOOD

- Grocery stores
- Pharmacies
- Shopping
- Restaurants
- Hospital
- Medical clinics
- Banks
- Transit
- Coffee shops

ACTIVITIES

- Educational activities
- Cultural activities
- Social and recreational programs
- Day trips*
- Exercise
- Live entertainment
- Live music events
- Gardening
- Yoga

DINING SERVICES

- Diversified menu
- À la carte menu
- Maître D'
- Meals for guests*
- Continental breakfast
- Family dinner
- Freshly prepared snacks
- Wine service

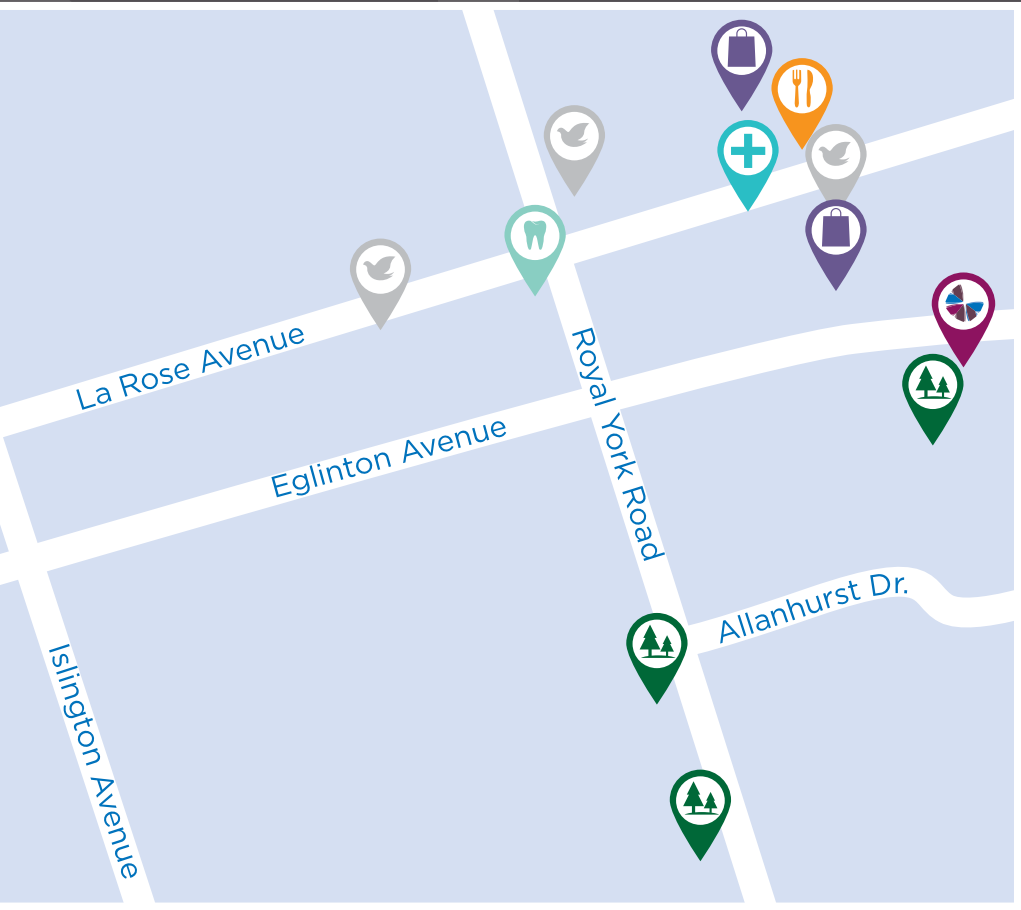
CARE SERVICES







- Medication supervision/administration*
- On-site Nurse
- Assistance with activities of daily living*
- On-call Nurse
- Pharmacy
- Physiotherapy*
- Esthetician services*

AMENITIES

- Dining room
- Private dining room
- Bistro/cafe
- Country kitchen
- Activity room
- Fitness room
- Movie theatre
- Multi-functional room
- Library

*Fee-for-service may apply.



-  Shopping
-  Medical clinic
-  Restaurant
-  Dentist
-  Place of worship
-  Park

CHARTWELL SCARLETT HEIGHTS

4005 Eglinton Avenue West, Etobicoke, ON M9A 5H3 • **647-846-7007**