



**CHARTwell**  
WATERFORD  
retirement residence



making people's lives BETTER



Experience **modern retirement living** in a desirable **North Oakville neighbourhood.**

## PART OF OUR COMMUNITY SINCE 2017

Chartwell Waterford is a modern retirement residence in the highly popular and growing residential areas of Palermo, Westoak Trails and Bronte Creek. We're nearby Westoak Trails Plaza and a variety of other local shops and services, including numerous restaurants, retail stores, medical clinics, and Oakville Trafalgar Memorial Hospital. If you are looking to run errands or attend an appointment, we have a town car service available for booking, and for visiting family and friends, we are easily accessible via the 407 and QEW.

At Chartwell Waterford, we offer an independent supportive living lifestyle, as well as dedicated Memory Living services for seniors living with dementia. Our residence is also conveniently next door to Chartwell Waterford Long Term Care, making it ideal for couples with loved ones living in long term care to visit via our covered tunnel connecting the two buildings.



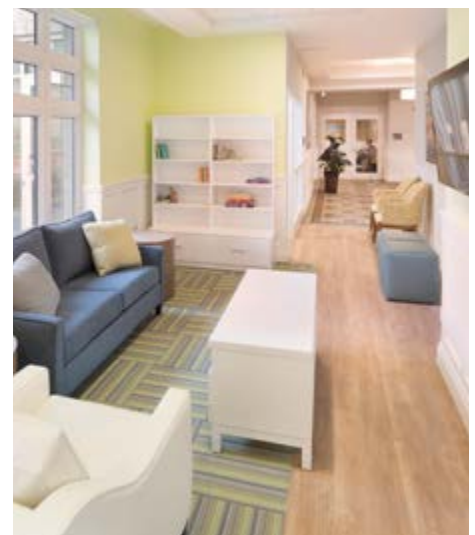
## OUR UNIQUE LIFESTYLE

An impeccably designed residence with a contemporary feel, Chartwell Waterford features an open-concept, accessible design defined by an airy colour palette, wainscoting and comfortable furnishings. Our suites are equally as welcoming, with 10ft ceilings that contribute to the fresh, bright feeling, Juliette balconies, and lovely views of the escarpment or courtyard.

Our retirement community also offers a range of appealing amenities on-site for social, fitness, leisure and dining experiences, including beautifully landscaped walking trails, manicured gardens, a bistro, high-end demonstration kitchen for intimate or large family gatherings, full-service dog wash station, theatre, hair salon and a family-friendly Kids Zone for visiting grandchildren to enjoy.

Our caring staff are dedicated to your health and happiness and partner with you to create a plan of care reflective of your unique lifestyle, empowering you to age in place without the need for multiple moves in future.

**Explore our Living at Chartwell brochure to learn more about dining, lifestyle activities and personalized care services.**



# FACTS & FEATURES



## IN THE NEIGHBOURHOOD

- Grocery stores
- Pharmacies
- Shopping
- Restaurants
- Hospital
- Medical clinics
- Banks
- Transit
- Coffee shops

## ACTIVITIES

- LiveNow program
- Educational activities
- Cultural activities
- Social and recreational programs
- Day trips\*
- Exercise
- Live entertainment
- Yoga

## DINING SERVICES

- Diversified menu
- À la carte menu
- Flexible dining times
- Themed dinner\*
- Meals for guests\*
- Wine service\*
- Catering\*

## CARE SERVICES








- Medication supervision/administration\*
- Assistance with activities of daily living\*
- On-site Nurse
- Visiting podiatrist\*
- Care Assist Program
- Lab services\*
- Visiting physicians\*
- Companionship\*

## AMENITIES

- Private dining room
- Bar/lounge
- Walking paths
- Bistro/cafe
- Demonstration kitchen
- Country kitchen
- Fitness room
- Movie theatre
- Kids zone

\*Fee-for-service may apply.



-  Grocery store
-  Bank
-  Coffee shop
-  Hospital
-  Library
-  Restaurant
-  Park

**CHARTWELL WATERFORD**

2160 Baronwood Drive, Oakville, ON L6M 0Y1 • 289-644-2951