



CHARTwell

TERRACE ON
THE SQUARE

retirement residence



making people's lives BETTER



Enjoy the vibrant retirement you deserve in a home with flexible care services in **uptown Waterloo.**

PART OF OUR LOCAL COMMUNITY SINCE 1999

Chartwell Terrace on the Square is an independent supportive living retirement residence in uptown Waterloo. Our conveniently located retirement community provides a comforting atmosphere where you'll feel at-home, thanks to bright and open amenities. Just look at our famous great room, which overlooks beautiful views of our greenspaces and gardens!

Located in Waterloo's uptown neighbourhood, our retirement residence is within minutes from

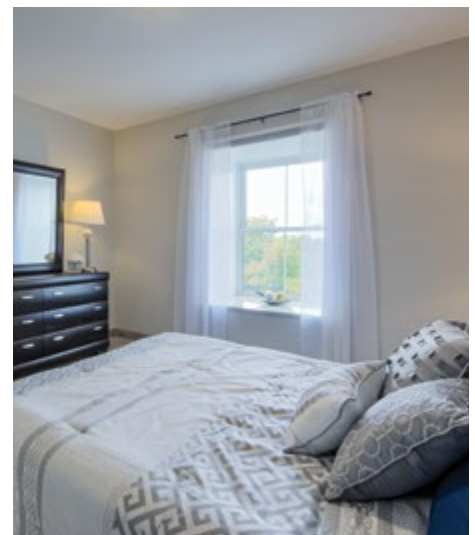
the community's rich heritage spots like the Earth Sciences museum or the Canadian Clay and Glass Gallery. Nearby you'll also find trendy restaurants and breweries, local supermarkets, and parks like Waterloo Park or Victoria Park. We're also close to Grand River Hospital. Public transit is accessible from our building, and we offer transport services too.

OUR UNIQUE LIFESTYLE

With an impressive choice of amenities and activities, including a lovely dining room overlooking greenery, a fitness room that hosts our popular Rhythm 'n' Moves exercise classes and many more, we make it easy to make new friends—and connect with old ones. For our culinary lovers, we offer activities centred around food in addition to our tasty and nutritious dining room options.

Whether you choose our modern and bright studio or one-bedroom suite, we'll take care of you. With access to three meals a day in our dining room and weekly housekeeping, you can focus on what brings you comfort and contentment. As your needs evolve, so do our services, including medication management, assistance with your morning or evening routine, and even 24-hour on-site nursing for individuals who need more daily support to live well.

Explore our Living at Chartwell brochure to learn more about dining, lifestyle activities and personalized care services.



FACTS & FEATURES



IN THE NEIGHBOURHOOD

- Grocery stores
- Pharmacies
- Shopping
- Restaurants
- Hospital
- Medical clinics
- Banks
- Transit
- Coffee shops

ACTIVITIES

- LiveNow program
- Educational activities
- Cultural activities
- Social and recreational programs
- Day trips*
- Exercise
- Live entertainment
- Live music events
- Gardening

DINING SERVICES

- Diversified menu
- À la carte menu
- Meals for guests*
- Flexible dining times
- Themed dinners*
- Freshly-prepared snacks
- Special diets accommodated
- Family dinner

CARE SERVICES

- Medication supervision/administration*
- CareRx Pharmacy
- Assistance with activities of daily living*
- On-site Nurse
- Vitals monitored*
- Nightly security checks
- Care Assist Program
- Visiting Physician*
- Companionship*

AMENITIES

- Dining room
- Private dining room
- Bistro/cafe
- Chapel
- Activity room
- Fitness room
- Movie theatre
- Sun room
- Walking paths

*Fee-for-service may apply.



-  Grocery store
-  Shopping
-  Restaurant
-  Bank
-  Liquor store
-  Cinema
-  Hospital
-  Park

CHARTWELL TERRACE ON THE SQUARE

100 Caroline Street South, Waterloo, ON N2L 1X5 • 226-336-8943