



CHARTwell
STONEHAVEN
retirement residence



making people's lives **BETTER**



“Combining **personalized service, beautiful natural surroundings** and an **engaging lifestyle** in South Kanata.”

PART OF OUR LOCAL COMMUNITY SINCE 2004

Life at Chartwell Stonehaven means you can benefit from a breadth of flexible service and accommodation options that cater to your unique lifestyle. We offer top-quality service delivery by one of the friendliest and most attentive staff teams in South Kanata.

If you enjoy spending time out of doors, you'll fall in love with our stunning central courtyard, considered one of our most celebrated on-site

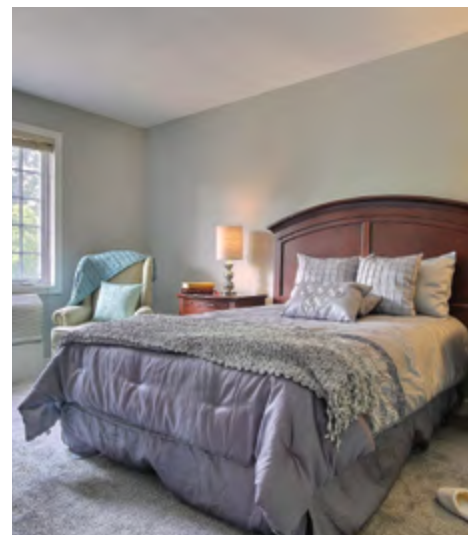
amenities. With pretty floral landscaping and raised garden beds for those with a green thumb, the courtyard plays host to outdoor movies and barbecues in the summer months, and is an idyllic place for quiet contemplation and connecting with nature. In fact, when many individuals find out their suites have walk-out terraces or balconies overlooking a courtyard blooming with seasonal blossoms, they know they've found home.

OUR UNIQUE LIFESTYLE

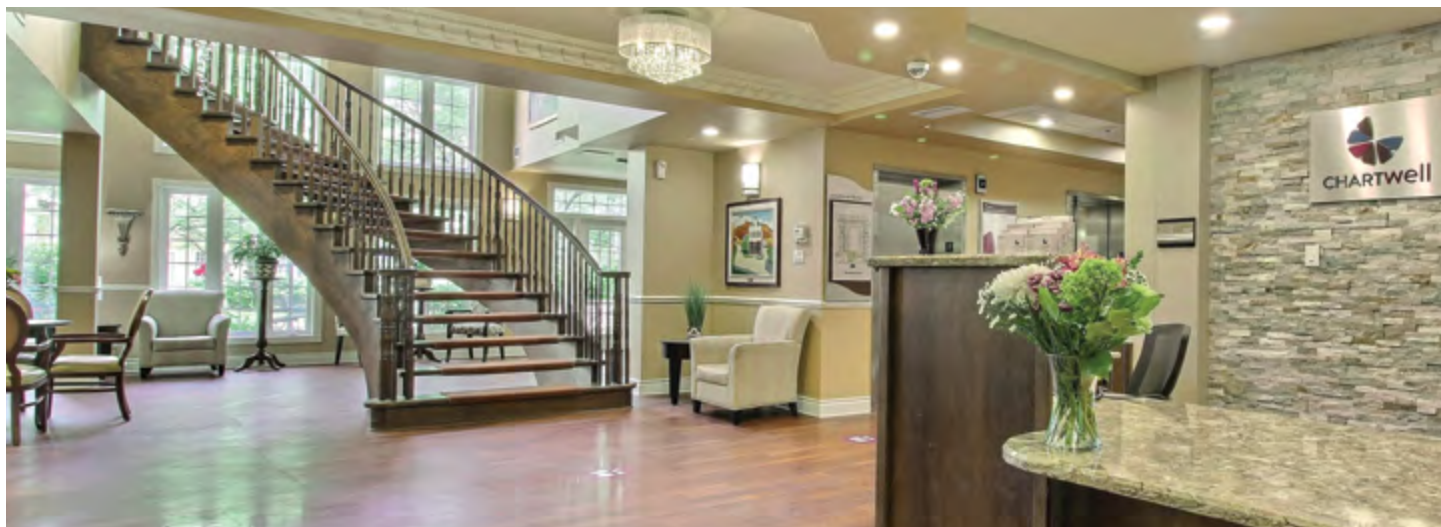
Chartwell Stonehaven is all about choice—and that includes what type of accommodation will make you feel most at home. In our seniors' apartment building we offer services like housekeeping and emergency response, while in our retirement living suites you can choose from independent supportive living services like dining options or medication management. Our long-service staff are dedicated to helping you lead a happy and healthy retirement, which is why our home enjoys such a strong reputation in the local community.

One of the most appreciated aspects of life here is the flexibility built into every individual's service package. We offer a wide variety of service options—from customizable dining packages to in-suite personal support—and here you only pay for those services you need to live with comfort and peace of mind. You can choose from an à la carte menu of customizable services that reflect your needs and lifestyle anytime.

Explore our Living at Chartwell brochure to learn more about dining, lifestyle activities and personalized care services.



FACTS & FEATURES



IN THE NEIGHBOURHOOD

- Grocery stores
- Pharmacies
- Shopping
- Restaurants
- Medical clinics
- Banks
- Transit
- Coffee shops
- Places of worship

ACTIVITIES

- LiveNow program
- Educational activities
- Cultural activities
- Social and recreational programs
- Day trips*
- Exercise
- Live entertainment
- Gardening
- Crafts

DINING SERVICES

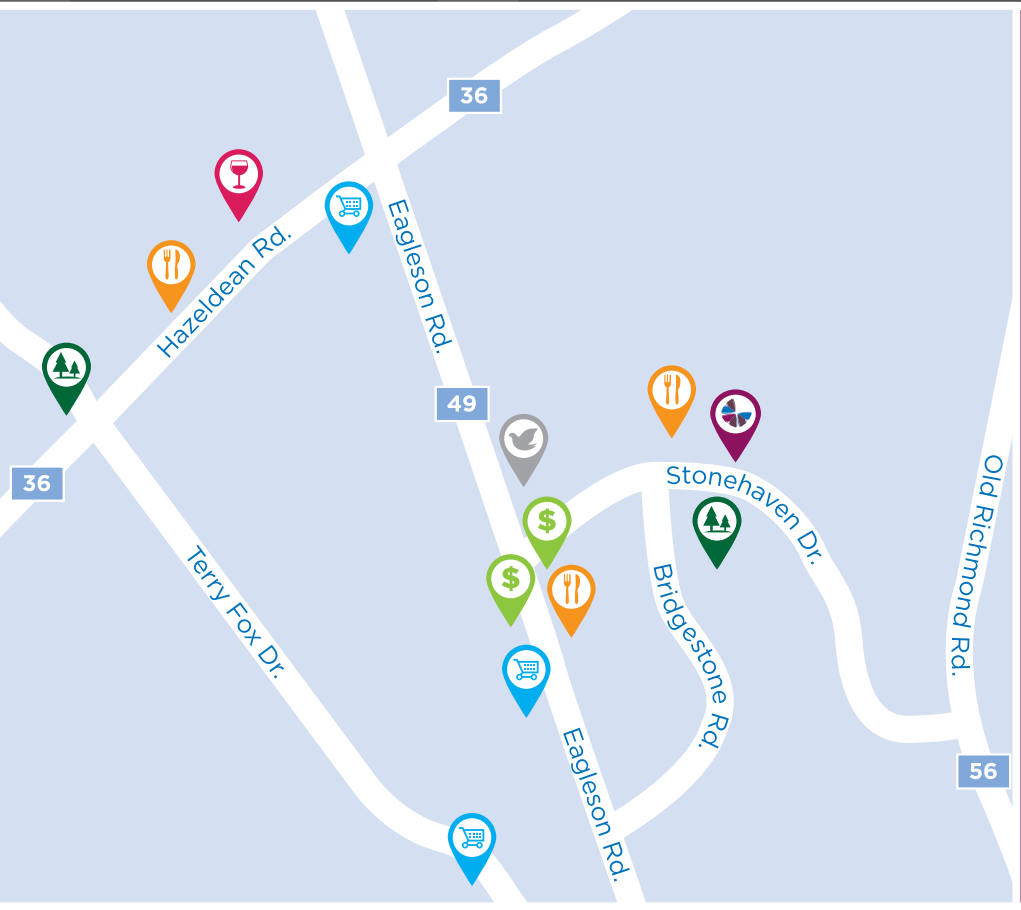
- Diversified menu
- À la carte menu
- Open seating dining
- Meals for guests*
- Catering*
- Freshly prepared snacks







CARE SERVICES

- Medication supervision/administration*
- Assistance with activities of daily living*
- On-call Nurse
- Pharmacy
- Physiotherapy*
- Care Assist Program
- Visiting Physician*
- Vitals monitored*

AMENITIES

- Dining room
- Private dining room
- Bistro/cafe
- Country kitchen
- Activity room
- Fitness room
- TV room
- Multi-functional room
- Library



-  Restaurant
-  Grocery store
-  Liquor store
-  Bank
-  Place of worship
-  Park

CHARTWELL STONEHAVEN

70 Stonehaven Drive, Kanata, ON K2M 3B4 • **613-663-2969**