



making people's lives BETTER



Lead an elegant, independent and supportive lifestyle in **the heart of The Glebe.**

PART OF OUR LOCAL COMMUNITY SINCE 2007

Chartwell Lord Lansdowne is in The Glebe, a city lover's paradise where lovely natural surroundings meet convenient services meant to enrich your retirement.

It's no surprise that many people choose to live with us because of our sought-after location, a beloved Ottawa neighbourhood with an abundance of charm and character. Surrounded by heritage homes, as well as a variety of restaurants, farmer's

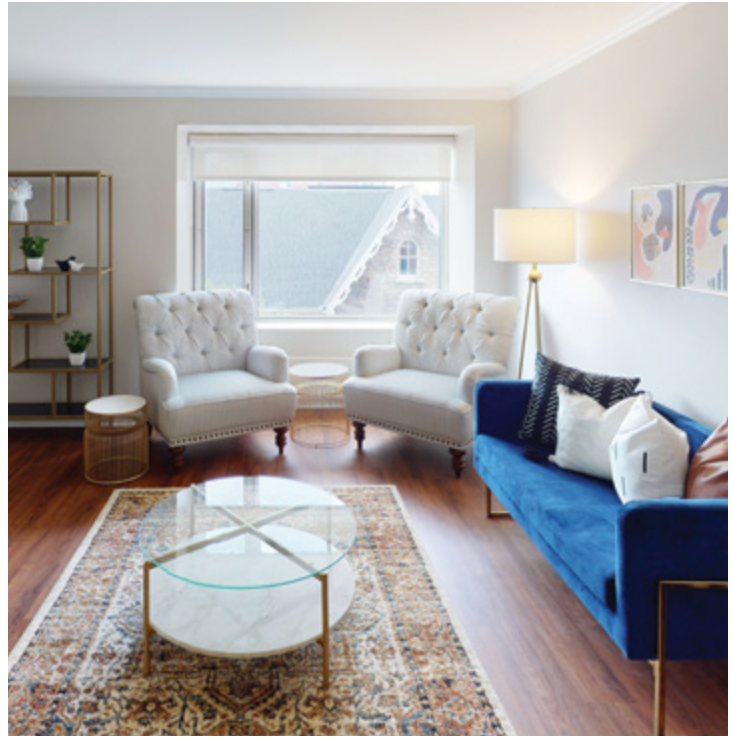
markets, arts and culture venues and even the city's most active sports stadium, it's a true example of both a traditional as well as vibrant setting. We have one of the best walking scores in the city—and is it any wonder when you can simply cross the street to enjoy Lansdowne Park, or find yourself taking in views of the Rideau Canal a mere three blocks away? We also have direct access to a seniors' centre and long term care home next door.

OUR UNIQUE LIFESTYLE

There's no denying that our residence has curb appeal, but when you walk through our doors, you'll be struck by just how attractive our home is. Our aesthetic is timeless and traditional—rich wood paneling, comfortable and tasteful furnishings, with large portraits that speak to Ottawa's celebrated history—and you'll see our attention to detail shine through in small touches like fresh floral arrangements. That same polish extends to our independent supportive living and assisted living suites, featuring big windows that let in an abundance of natural light and provide great neighbourhood views. You'll love waking up in the morning, pouring yourself a cup of coffee and watching the city come alive from the comfort of your well-appointed suite.

Chartwell Lord Lansdowne offers a host of convenient services, including delicious dining, leisure opportunities and outings, and personalized support—all of which can amount to the retirement years you've always desired.

Explore our Living at Chartwell brochure to learn more about dining, lifestyle activities and personalized care services.



FACTS & FEATURES



IN THE NEIGHBOURHOOD

- Grocery stores
- Pharmacies
- Shopping
- Restaurants
- Hospital
- Medical clinics
- Banks
- Transit
- Coffee shops

ACTIVITIES

- LiveNow program
- Educational activities
- Cultural activities
- Social and recreational programs
- Day trips*
- Exercise
- Live entertainment
- Live music events
- Guest speaker

DINING SERVICES

- Diversified menu
- À la carte menu
- Flexible dining times
- Maître D'
- Themed dinner*
- Meals for guests*
- Catering*
- Family dinner

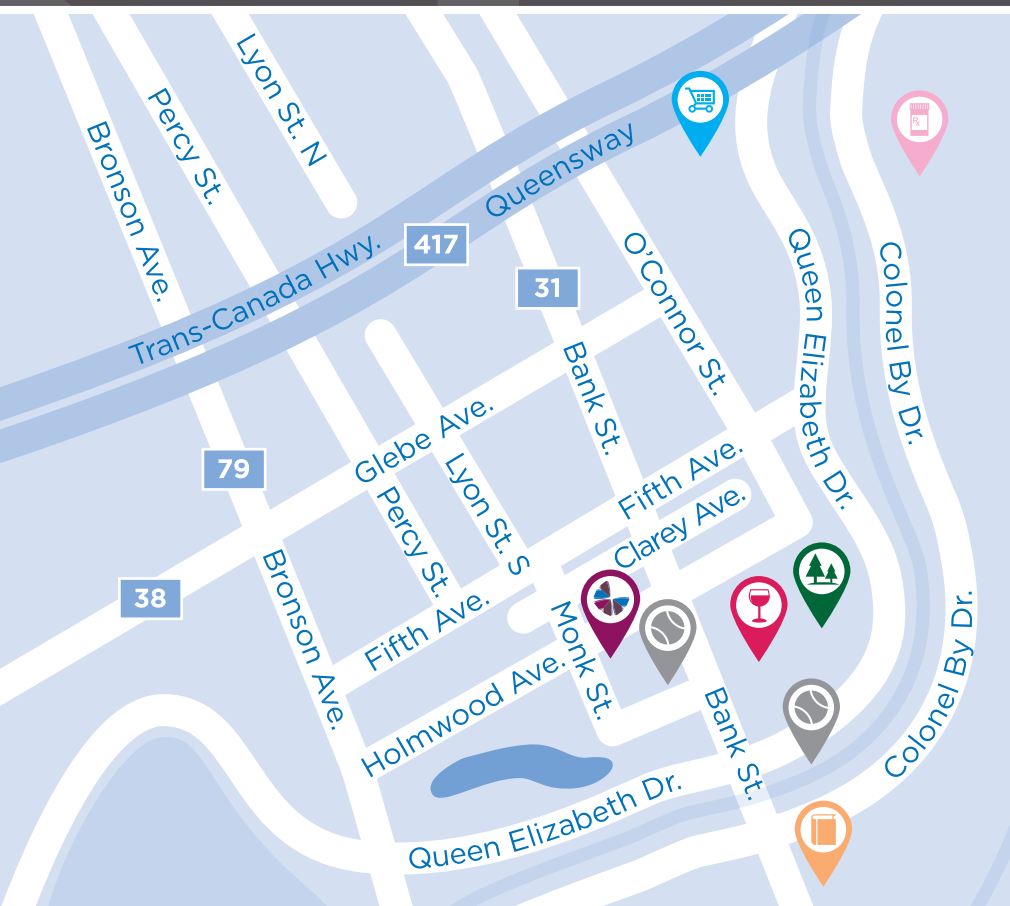
CARE SERVICES

- Medication supervision/administration*
- Assistance with activities of daily living*
- On-site Nurse
- Visiting physician*
- Oxygen service
- Blood pressure clinic*
- Lab services*
- Care Assist Program

AMENITIES

- Dining room
- Private dining room
- Chapel
- Country kitchen
- Activity room
- Fitness room
- Movie theatre
- Library
- Fireside lounge

*Fee-for-service may apply.



-  Community centre/
sports park
-  Grocery store
-  Liquor store
-  Library
-  Park
-  Pharmacy

CHARTWELL LORD LANSDOWNE

920 Bank Street, Ottawa, ON K1S 1M8 • 613-688-1885