



making people's lives BETTER



Be part of our **intimate, close-knit community**, set in beautiful natural surroundings **in Kingston.**

PART OF OUR LOCAL COMMUNITY SINCE 2005

Chartwell Conservatory Pond is an intimate and inviting retirement residence with a strong local reputation in the Kingston community. Featuring an abundance of trees and greenery—not to mention a beautiful pond that offers stunning views—our neighbourhood is a beautiful place to call home. We provide an independent supportive living lifestyle that is personalized to your unique needs and preferences, giving you the peace of mind you deserve.

Conveniently located near the intersection of Bath Road and Bayridge Drive, we are close to

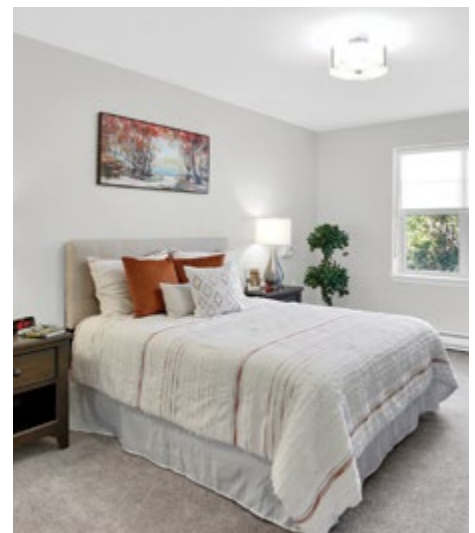
an abundance of services and amenities within walking and driving distance—including a grocery store and pharmacy right across the street—making running errands effortless. Our central location is also just a few minutes from Gardiner's Road, featuring many retailers, restaurants, movie theatres and medical clinics. Here, you can enjoy a quiet neighbourhood while being close to everything Kingston has to offer.

OUR UNIQUE LIFESTYLE

As you walk through our doors, you'll find our retirement home is defined by comfortable furnishings, a warm colour palette, and a high-ceilinged dining room with large windows where you'll find yourself enjoying a delicious meal prepared by our award-winning chef. Our suites are equally attractive and come in a selection of spacious and well-designed studio, one- and two-bedroom layouts that feel modern and fresh.

You'll also be struck by our vibrant atmosphere and the palpable sense of community shared by residents and staff. Here, you can pursue your interests, get fit, volunteer or simply socialize in an array of amenity spaces, including an on-site chapel, movie theatre, tuck shop, games room, fitness room, library, spa, sunroom and many more. Our dedicated and caring staff add to the inviting and friendly atmosphere, where you too will want to be a part of our big family.

Explore our Living at Chartwell brochure to learn more about dining, lifestyle activities and personalized care services.



FACTS & FEATURES



IN THE NEIGHBOURHOOD

- Grocery stores
- Pharmacies
- Shopping
- Transit
- Parks
- Golf courses
- Royal Canadian Legion
- Airport
- Harbour

ACTIVITIES

- LiveNow program
- Exercise
- Live entertainment
- Day trips*
- Guest speakers
- Educational activities
- Social and recreational programs

DINING SERVICES

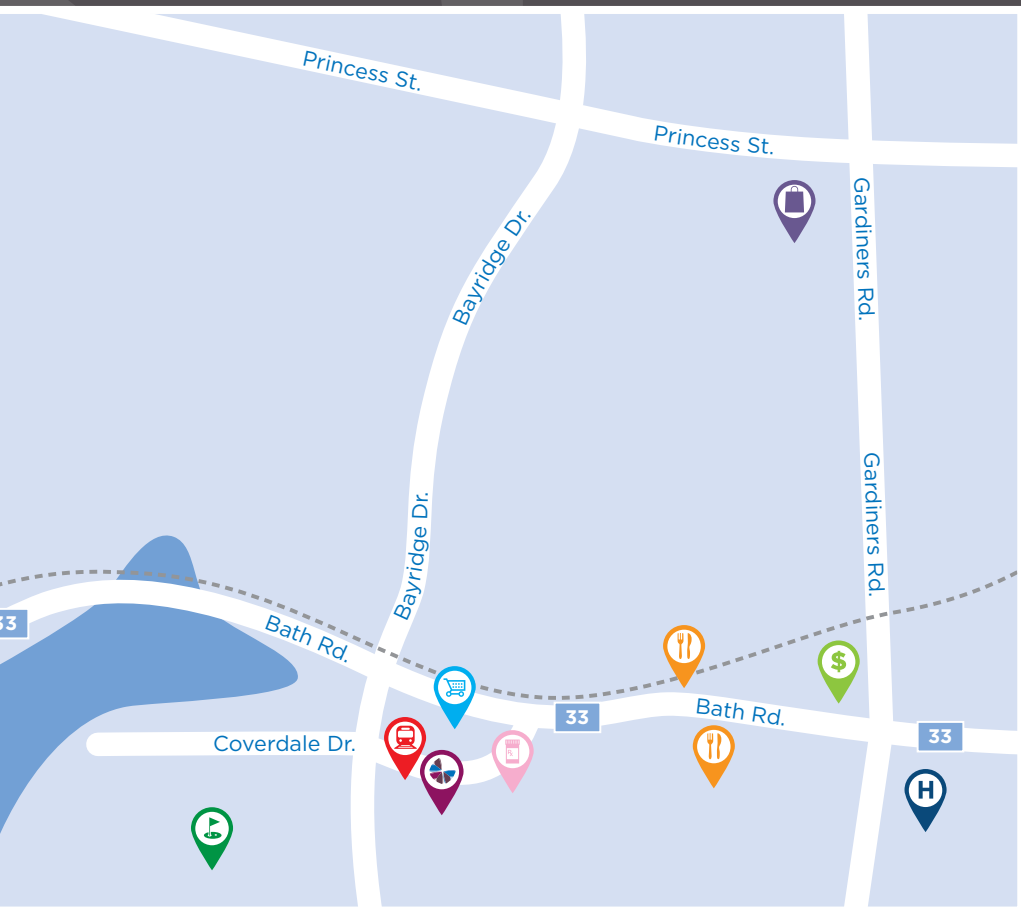
- Diversified menu
- À la carte menu
- Meals for guests*
- Flexible dining times
- Themed dinners*
- Freshly-prepared snacks
- Catering*
- Open-seating dining









CARE SERVICES

- On-call Nurse
- Assistance with activities of daily living*
- Care Assist Program
- Audiology/hearing clinic*
- Physiotherapy*
- Blood pressure clinic*
- Virtual Physician Program

AMENITIES

- Dining room
- Activity room
- Fitness room
- Movie theatre
- Library
- Walking paths
- Wellness centre
- Bistro/cafe
- Personal mailbox



-  Grocery store
-  Restaurant
-  Shopping
-  Bank
-  Hospital
-  Pharmacy
-  Transit
-  Golf course

CHARTWELL CONSERVATORY POND

1499 Stoneridge Drive, Kingston, ON K7M 9H9 • 613-817-9875