



making people's lives BETTER<sup>®</sup>



“A traditional **retirement community** offering **personalized support** in the heart of historic Markham.”

## PART OF THE MARKHAM COMMUNITY SINCE 2004

Chartwell Rouge Valley Retirement Residence is nestled in an historic neighbourhood of Markham backing onto conservation land. Our retirement community shares in the distinct character and ambience of our lovely setting, which includes Markham Heritage Estates around the corner and Markham Museum. Running errands or getting together with friends and family is easy for our residents, as we are steps away from a host of local amenities like shopping, coffee shops, pharmacies, medical clinics and other convenient health care services.

Our senior living residence is inspired by tradition yet designed with a full complement of contemporary amenities and services. Here, you can choose from spacious studio, one- and two-bedroom suites, as well as benefit from a variety of independent supportive living services, including delicious, prepared meals, housekeeping and optional care services.

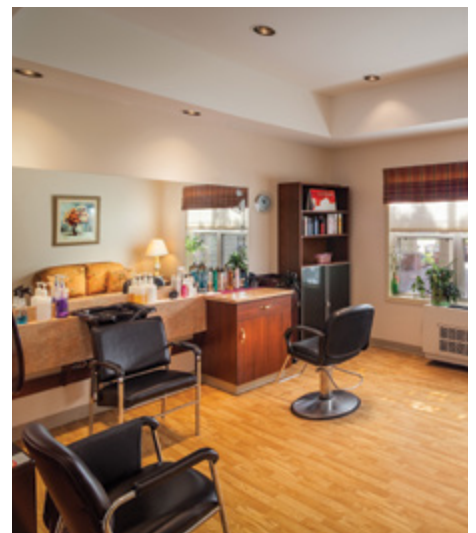


## OUR UNIQUE LIFESTYLE

If you're an independent senior looking to benefit from a comfortable, worry-free lifestyle, you'll find Chartwell Rouge Valley is the perfect place to enjoy your retirement years to the fullest. When you walk through our doors, you'll be struck by our traditional design elements and warm, intimate atmosphere, where residents and staff enjoy the company of one another and form an inclusive, supportive community.

We offer a variety of on-site amenities that serve as gathering places for our many lifestyle experiences, including a theatre room, salon, library and social dining room. If you like being outdoors or taking your pet for a walk, you'll also love our walking trail around the residence, where you can spot a variety of birds and wildlife. You may also consider taking your morning paper and coffee for quiet enjoyment in our gorgeous courtyard, a park-like setting featuring manicured gardens, seating and a gazebo.

**Explore our Living at Chartwell brochure to learn more about dining, lifestyle activities and personalized care services.**



# FACTS & FEATURES



## IN THE NEIGHBOURHOOD

- Pharmacies
- Shopping
- Restaurants
- Hospital
- Medical clinics
- Banks
- Coffee shops
- Museums
- Seniors Centres

## ACTIVITIES

- LiveNow program
- Educational activities
- Social and recreational programs
- Day trips\*
- Exercise
- Live entertainment
- Gardening
- Yoga
- Guest speakers

## DINING SERVICES

- Diversified menu
- À la carte menu
- Themed dinner\*
- Meals for guests\*
- Family dinner
- Freshly prepared snacks

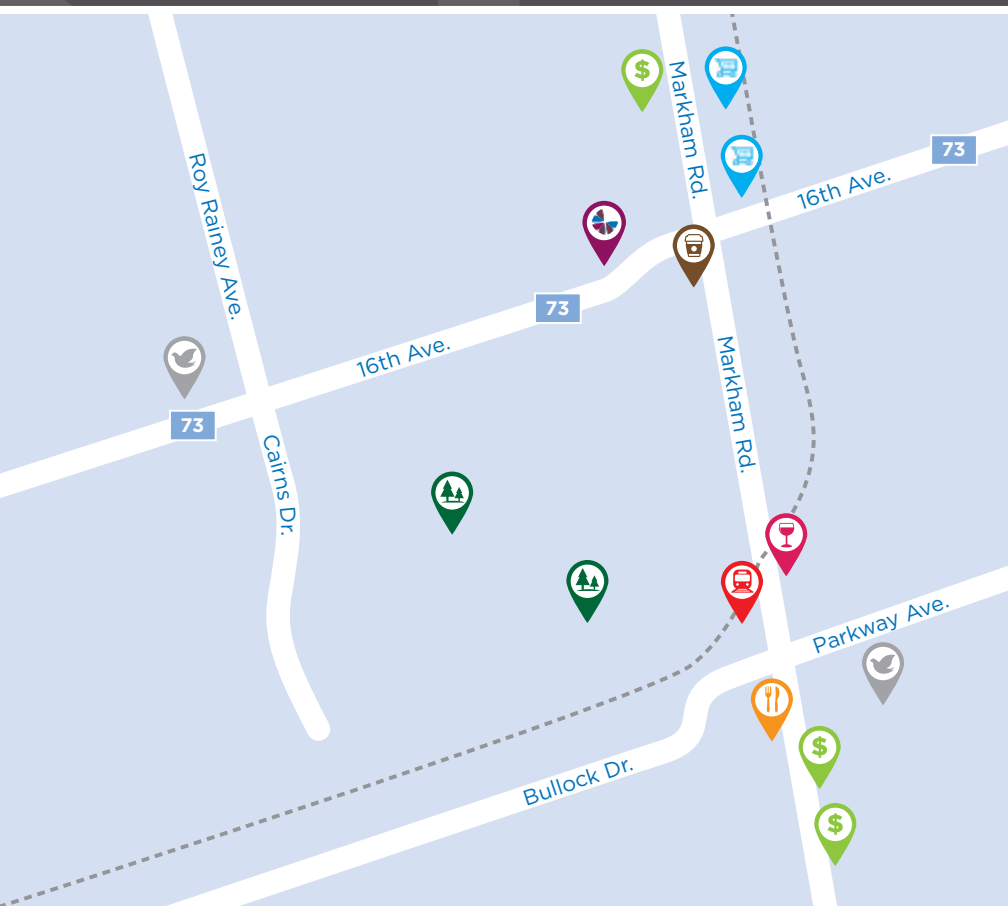
## CARE SERVICES









- Medication supervision/administration\*
- Assistance with activities of daily living\*
- On-site Nurse
- Physician visits\*
- Vitals monitored\*
- Blood pressure clinic\*
- Lab services\*
- Visiting Massage Therapist\*

## AMENITIES

- Dining room
- Bistro/cafe
- Activity room
- Fitness room
- Movie theatre
- Library
- Lounge
- Walking paths
- Outdoor greenspace

\*Fee-for-service may apply.



-  Restaurant
-  Grocery store
-  Liquor store
-  Bank
-  Coffee shop
-  Place of worship
-  Park
-  Transit

## CHARTWELL ROUGE VALLEY

5958 16th Avenue, Markham, ON L3P 8N1 • 289-378-6654