



**THE EDWARD**  
*Boutique Living by Chartwell*

3023 16 Street SW Calgary, Alberta  
**587-887-0094**

# Suite Plans

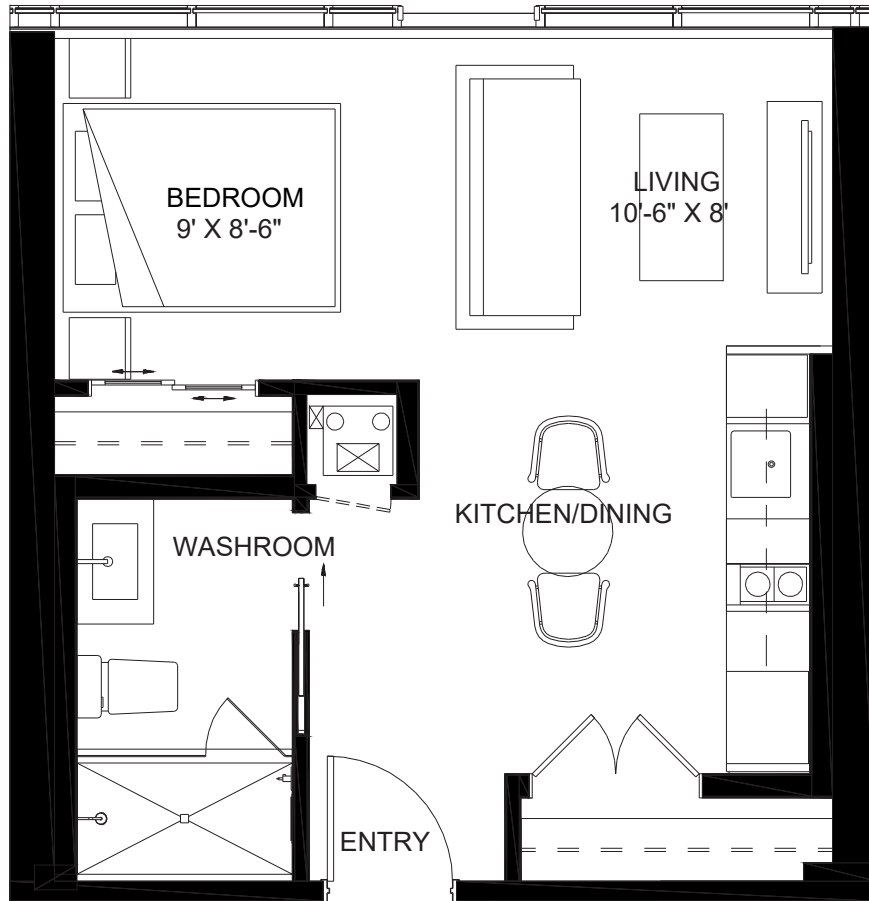
## STUDIO

ALL ILLUSTRATIONS ARE ARTIST'S CONCEPT PLANS AND SPECIFICATIONS MAY CHANGE WITHOUT NOTICE.  
ACTUAL USABLE FLOOR SPACE MAY VARY FROM STATED FLOOR AREA. E & O.E.



# THE EDWARD

*Boutique Living by Chartwell*



Plan N

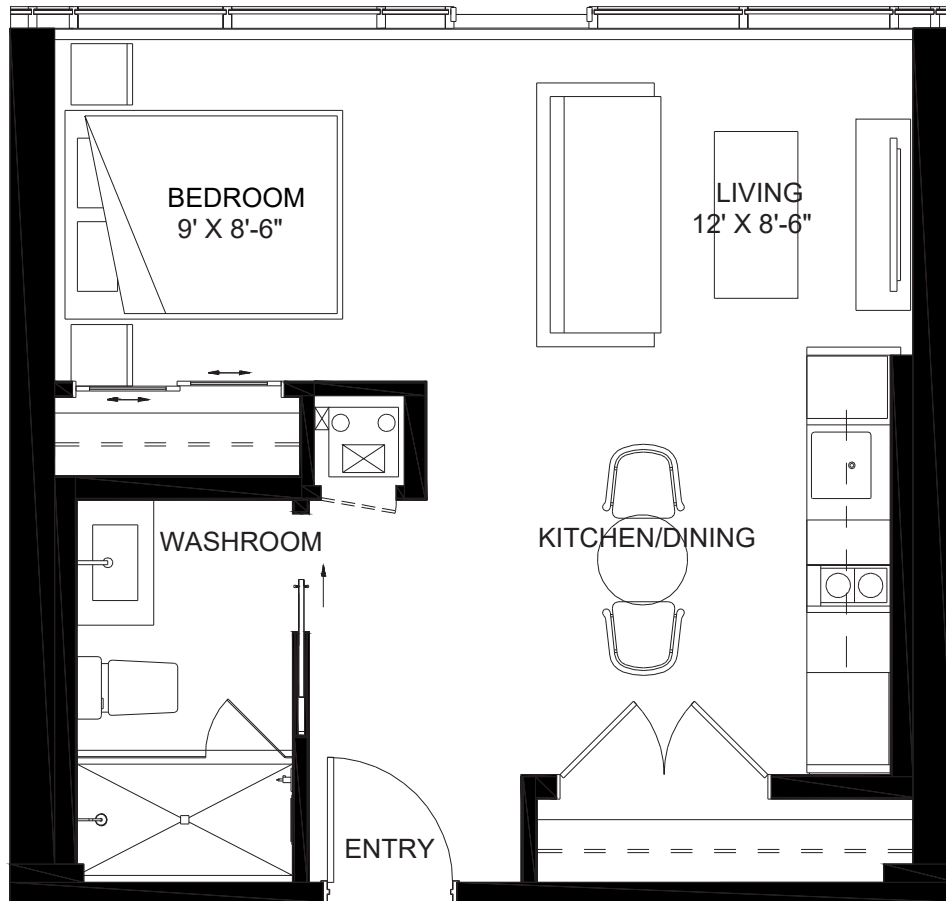
Studio  
421-480 sq.ft.

ALL ILLUSTRATIONS ARE ARTIST'S CONCEPT PLANS AND SPECIFICATIONS MAY CHANGE WITHOUT NOTICE.  
ACTUAL USABLE FLOOR SPACE MAY VARY FROM STATED FLOOR AREA. E & O.E.



# THE EDWARD

*Boutique Living by Chartwell*



Plan O

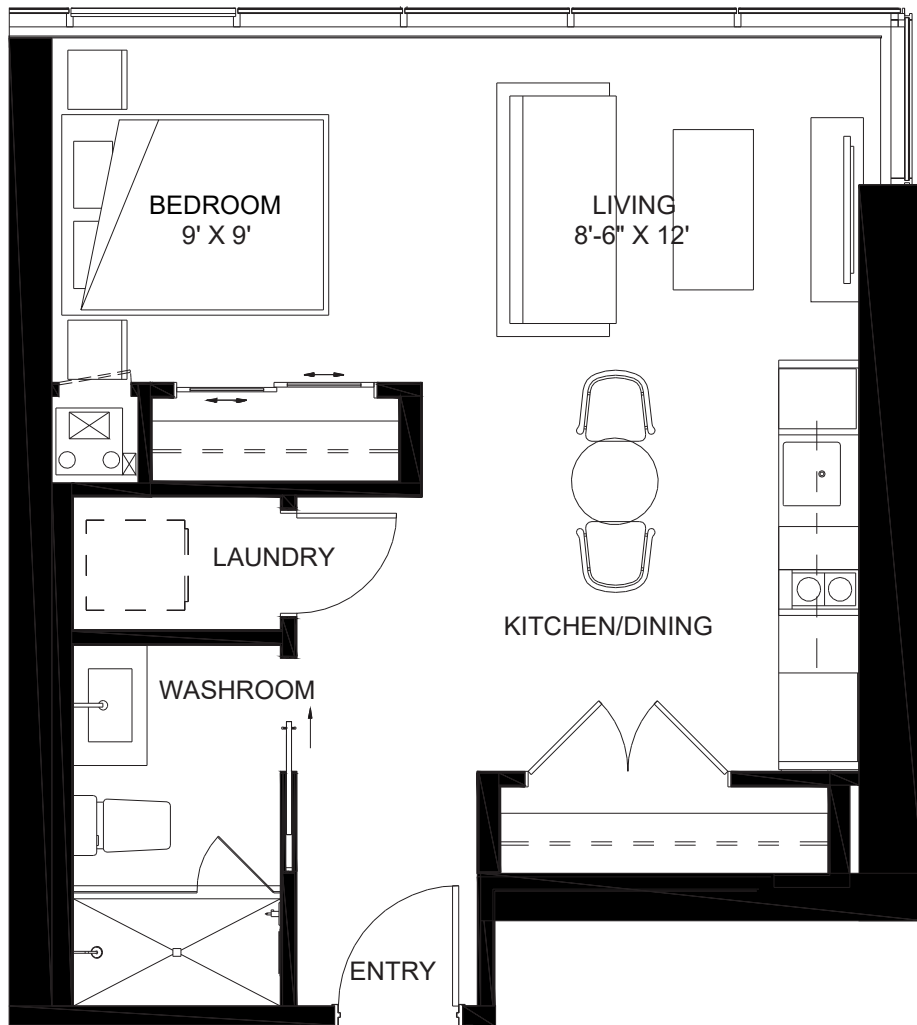
Studio  
454-462 sq.ft.

ALL ILLUSTRATIONS ARE ARTIST'S CONCEPT PLANS AND SPECIFICATIONS MAY CHANGE WITHOUT NOTICE.  
ACTUAL USABLE FLOOR SPACE MAY VARY FROM STATED FLOOR AREA. E & O.E.



# THE EDWARD

*Boutique Living by Chartwell*



Plan V

Studio Penthouse  
517 sq.ft.

ALL ILLUSTRATIONS ARE ARTIST'S CONCEPT PLANS AND SPECIFICATIONS MAY CHANGE WITHOUT NOTICE.  
ACTUAL USABLE FLOOR SPACE MAY VARY FROM STATED FLOOR AREA. E & O.E.