



**CHARTwell**

**ROCKCLIFFE**

retirement residence

100 Island Lodge Road, Ottawa  
**343-883-9902**

# Suite Plans

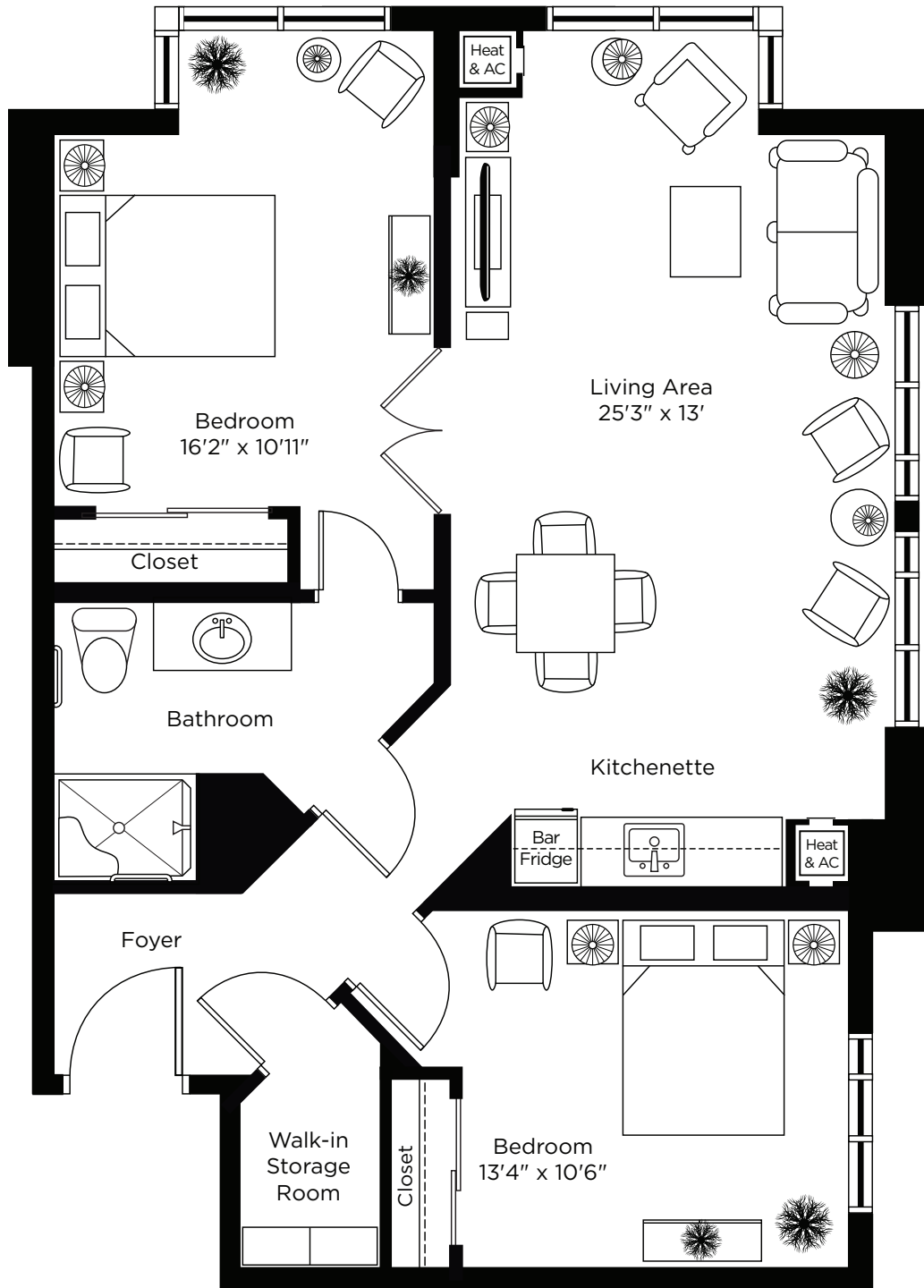
## TWO BEDROOM

**Independent Living  
(IL)**

ALL ILLUSTRATIONS ARE ARTIST'S CONCEPT PLANS AND SPECIFICATIONS MAY CHANGE WITHOUT NOTICE.  
ACTUAL USABLE FLOOR SPACE MAY VARY FROM STATED FLOOR AREA. E & O.E.

# The Lindenlea

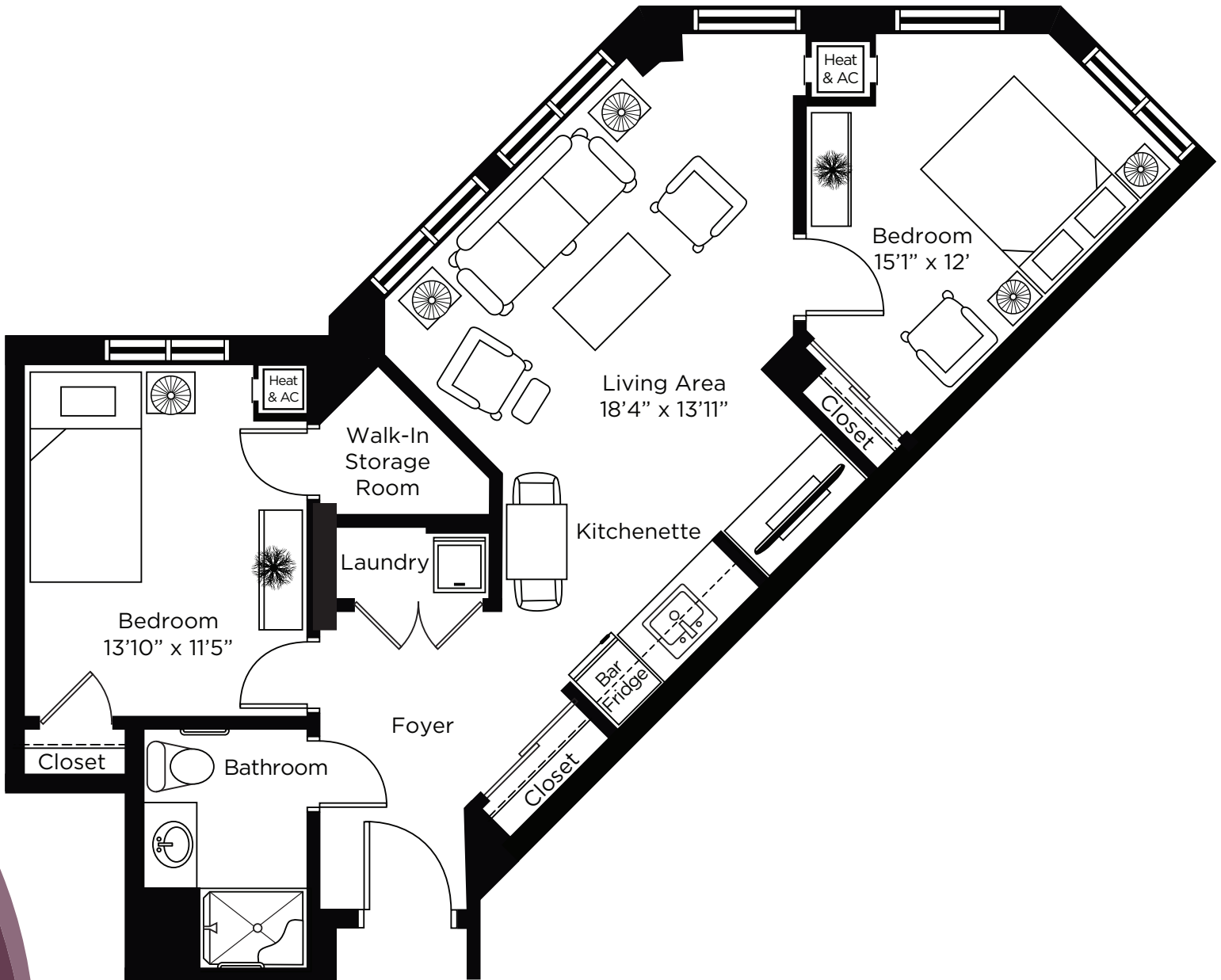
Two Bedroom  
 939 sq.ft.



ALL ILLUSTRATIONS ARE ARTIST'S CONCEPT PLANS AND SPECIFICATIONS MAY CHANGE WITHOUT NOTICE. ACTUAL USABLE FLOOR SPACE MAY VARY FROM STATED FLOOR AREA. E & O.E.

# The Strathcona

Two Bedroom  
 956 sq.ft.



ALL ILLUSTRATIONS ARE ARTIST'S CONCEPT PLANS AND SPECIFICATIONS MAY CHANGE WITHOUT NOTICE. ACTUAL USABLE FLOOR SPACE MAY VARY FROM STATED FLOOR AREA. E & O.E.