



EMERALD  
HILLS  
retirement residence

# 1 Bedroom

making people's lives **BETTER**

[CHARTwell.COM](https://www.chartwell.com)

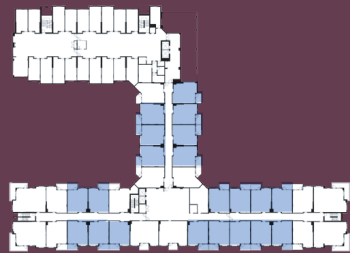
# 1 bedroom - Type A1



Main floor



2nd floor



3rd-5th floor



## Unit A1

657 sq ft

Balcony:

58 sq ft

### Unit numbers

- 105, 106, 107, 108, 109, 110,  
205, 207, 206, 208, 210, 212, 213,  
214, 215, 216, 217, 218, 219, 220,  
305, 306, 307, 308, 310, 313, 314,  
315, 316, 317, 318, 319, 320, 321,  
328, 329, 330, 331, 332, 333, 335,  
405, 406, 407, 408, 410, 413, 414,  
415, 416, 417, 418, 419, 420, 421,  
428, 429, 430, 431, 432, 433, 435,  
505, 506, 507, 508, 510, 513, 514,  
515, 516, 517, 518, 519, 520, 521,  
528, 529, 530, 531, 533, 535

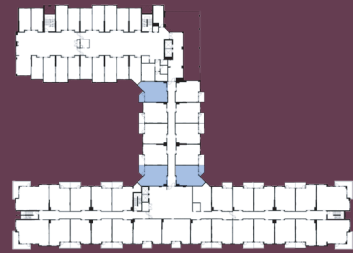


**CHARTWELL**  
**EMERALD**  
**HILLS**  
retirement residence

Prices, materials, areas and dimensions are approximate and may change without notice. If applicable, area and location of balconies/terraces may be changed, varied or mirrored from one floor to another. Furniture is shown for illustrative purposes only. Gross unit area is obtained by including exterior walls as well as half of both demising and corridor walls.

**Call us today 587-745-2068 • Chartwell.com**

# 1 bedroom - Type A2



3rd-5th floor



**Unit A2**  
694 sq ft

Balcony:  
58 sq ft

Unit numbers

326, 327, 334, 427, 426, 434, 526,  
527, 534,



Prices, materials, areas and dimensions are approximate and may change without notice. If applicable, area and location of balconies/terraces may be changed, varied or mirrored from one floor to another. Furniture is shown for illustrative purposes only. Gross unit area is obtained by including exterior walls as well as half of both demising and corridor walls.

Call us today 587-745-2068 • Chartwell.com

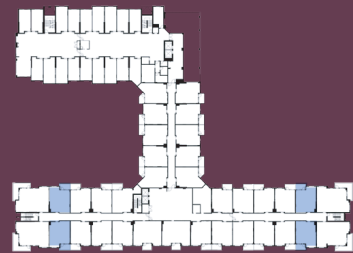
# 1 bedroom - Type A3



Main floor



2nd floor



3rd-5th floor



## Unit A3

682 sq ft

Balcony:

58 sq ft

### Unit numbers

103, 104 , 221, 222, 203, 204, 303,  
304, 322, 323, 403, 404, 422, 423,  
503, 504, 522, 523



**CHARTWELL**  
**EMERALD**  
**HILLS**  
retirement residence

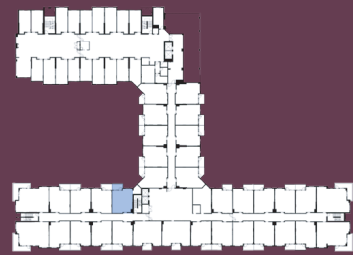
Prices, materials, areas and dimensions are approximate and may change without notice. If applicable, area and location of balconies/terraces may be changed, varied or mirrored from one floor to another. Furniture is shown for illustrative purposes only. Gross unit area is obtained by including exterior walls as well as half of both demising and corridor walls.

**Call us today 587-745-2068 • Chartwell.com**

1 bedroom - Type A4



2nd floor



3rd-5th floor



**Unit A4**  
747 sq ft  
Balcony:  
58 sq ft

Unit numbers  
209, 309, 409, 509



Prices, materials, areas and dimensions are approximate and may change without notice. If applicable, area and location of balconies/terraces may be changed, varied or mirrored from one floor to another. Furniture is shown for illustrative purposes only. Gross unit area is obtained by including exterior walls as well as half of both demising and corridor walls.

Call us today 587-745-2068 • Chartwell.com

# 1 bedroom - Type E1



7th-10th floor



## Unit E1

632 sq ft

Balcony:

76 sq ft

### Unit numbers

702, 704, 705, 706, 708,  
802, 804, 805, 806, 808,  
902, 904, 905, 906, 908,  
1002, 1004, 1005, 1006, 1008

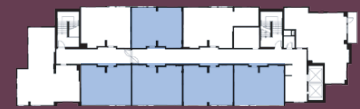


**CHARTWELL**  
**EMERALD**  
**HILLS**  
retirement residence

Prices, materials, areas and dimensions are approximate and may change without notice. If applicable, area and location of balconies/terraces may be changed, varied or mirrored from one floor to another. Furniture is shown for illustrative purposes only. Gross unit area is obtained by including exterior walls as well as half of both demising and corridor walls.

Call us today 587-745-2068 • [Chartwell.com](http://Chartwell.com)

# 1 bedroom - Type E1-A



\*6th floor



**Unit E1-A**  
632 sq ft  
Balcony:  
N/A

Unit numbers  
602, 604, 605, 606, 608



Prices, materials, areas and dimensions are approximate and may change without notice. If applicable, area and location of balconies/terraces may be changed, varied or mirrored from one floor to another. Furniture is shown for illustrative purposes only. Gross unit area is obtained by including exterior walls as well as half of both demising and corridor walls.

Call us today 587-745-2068 • Chartwell.com

# 1 bedroom - Type E2



7th-10th floor



**Unit E2**  
567 sq ft  
Balcony:  
76 sq ft

Unit numbers  
707, 807, 907, 1007

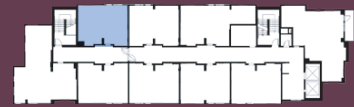


Prices, materials, areas and dimensions are approximate and may change without notice. If applicable, area and location of balconies/terraces may be changed, varied or mirrored from one floor to another. Furniture is shown for illustrative purposes only. Gross unit area is obtained by including exterior walls as well as half of both demising and corridor walls.

Call us today 587-745-2068 • [Chartwell.com](http://Chartwell.com)



# 1 bedroom - Type E2-A



\*6th floor



**Unit E2-A**  
567 sq ft  
Balcony:  
N/A

Unit numbers  
607



Prices, materials, areas and dimensions are approximate and may change without notice. If applicable, area and location of balconies/terraces may be changed, varied or mirrored from one floor to another. Furniture is shown for illustrative purposes only. Gross unit area is obtained by including exterior walls as well as half of both demising and corridor walls.

**Call us today 587-745-2068 • Chartwell.com**