



making people's lives BETTER





Experience **personalized retirement living** in a traditional setting in desirable **South Guelph**.

## PART OF THE LOCAL COMMUNITY SINCE 2008

Chartwell Royal on Gordon offers an independent and active lifestyle for seniors who want to belong to a vibrant community, as well as a choice of retirement residence suites and seniors' townhomes. Here, you can benefit from a variety of personalized services delivered by friendly and knowledgeable staff, including care support if you need additional daily assistance to live in complete comfort and satisfaction.

Our retirement community is ideally located in Guelph's south end, where you'll find a combination

of small-town friendliness and big-city amenities. From banks, grocery stores and restaurants to retailers, pharmacies and medical services, everything you could need to run errands or enjoy time with family can be found in our well-served neighbourhood. Speaking of family, many of our residents' children and grandchildren also call our community home, and for those who live out of town, they appreciate that we're only a 10-minute drive from the 401.

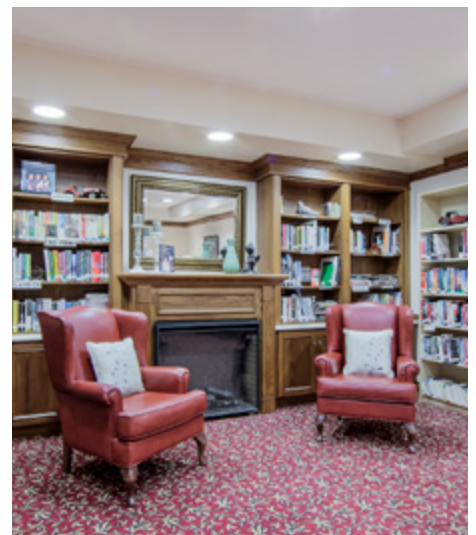


## OUR UNIQUE LIFESTYLE

Traditional, intimate, charming—these are just a few words that describe how our home feels. When you walk through our doors, you'll instantly sense the energy that defines our atmosphere, where you'll see residents chatting in the front hall, socializing or playing cards in our bistro, or visiting with family and friends. We have an open-concept layout that provides convenient access to all on-site amenities, including our light-filled dining room, where residents enjoy delicious and nutritious meals, great conversation and lovely outdoor views. Dark oak finishes, a stone fireplace and maroon and gold furnishings add to our home's warm and welcoming feel.

You'll feel equally taken by how lovely our spacious suites with high ceilings are, which many remark are well-appointed and easily accommodate furniture and belongings. We also have a gorgeous private courtyard that serves as a peaceful sanctuary for residents looking to be closer to nature.

**Explore our Living at Chartwell brochure to learn more about dining, lifestyle activities and personalized care services.**



# FACTS & FEATURES



## IN THE NEIGHBOURHOOD

- Grocery stores
- Pharmacies
- Shopping
- Restaurants
- Hospital
- Medical clinics
- Banks
- Coffee shops
- Places of worship

## ACTIVITIES

- LiveNow program
- Educational activities
- Cultural activities
- Social and recreational programs
- Day trips\*
- Exercise
- Live entertainment
- Gardening
- Yoga

## DINING SERVICES

- Diversified menu
- À la carte menu
- Flexible dining times
- Themed dinner\*
- Meals for guests\*
- Continental breakfast
- Catering\*
- Freshly prepared snacks

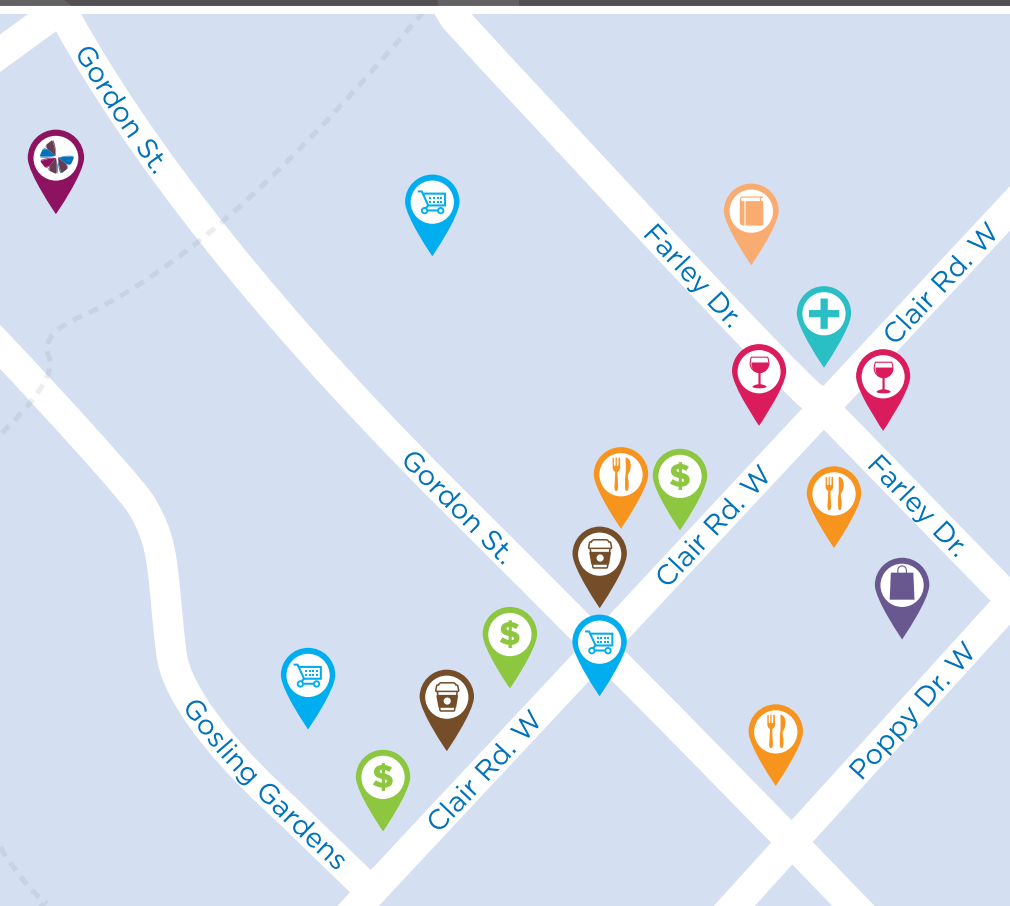
## CARE SERVICES

- Medication supervision/administration\*
- Assistance with activities of daily living\*
- Medical attention\*
- On-site Nurse
- Physician visits\*
- Vitals monitored\*
- Oxygen service\*
- Audiology/hearing clinic\*

## AMENITIES

- Dining room
- Bistro/cafe
- Activity room
- Fitness room
- Movie theatre
- Multi-functional room
- Library
- Lounge
- Walking paths

\*Fee-for-service may apply.



- \$ Bank
- Coffee shop
- Grocery store
- Library
- Liquor store
- + Medical clinic
- Fork and knife Restaurant
- Shopping bag Shopping

### CHARTWELL ROYAL ON GORDON

1691 Gordon Street, Guelph, ON N1L 1E1 • 226-706-8824