



**CHARTwell**

PICKERING  
CITY CENTRE

retirement residence

1801 Valley Farm Road, Pickering  
**289-631-1944**

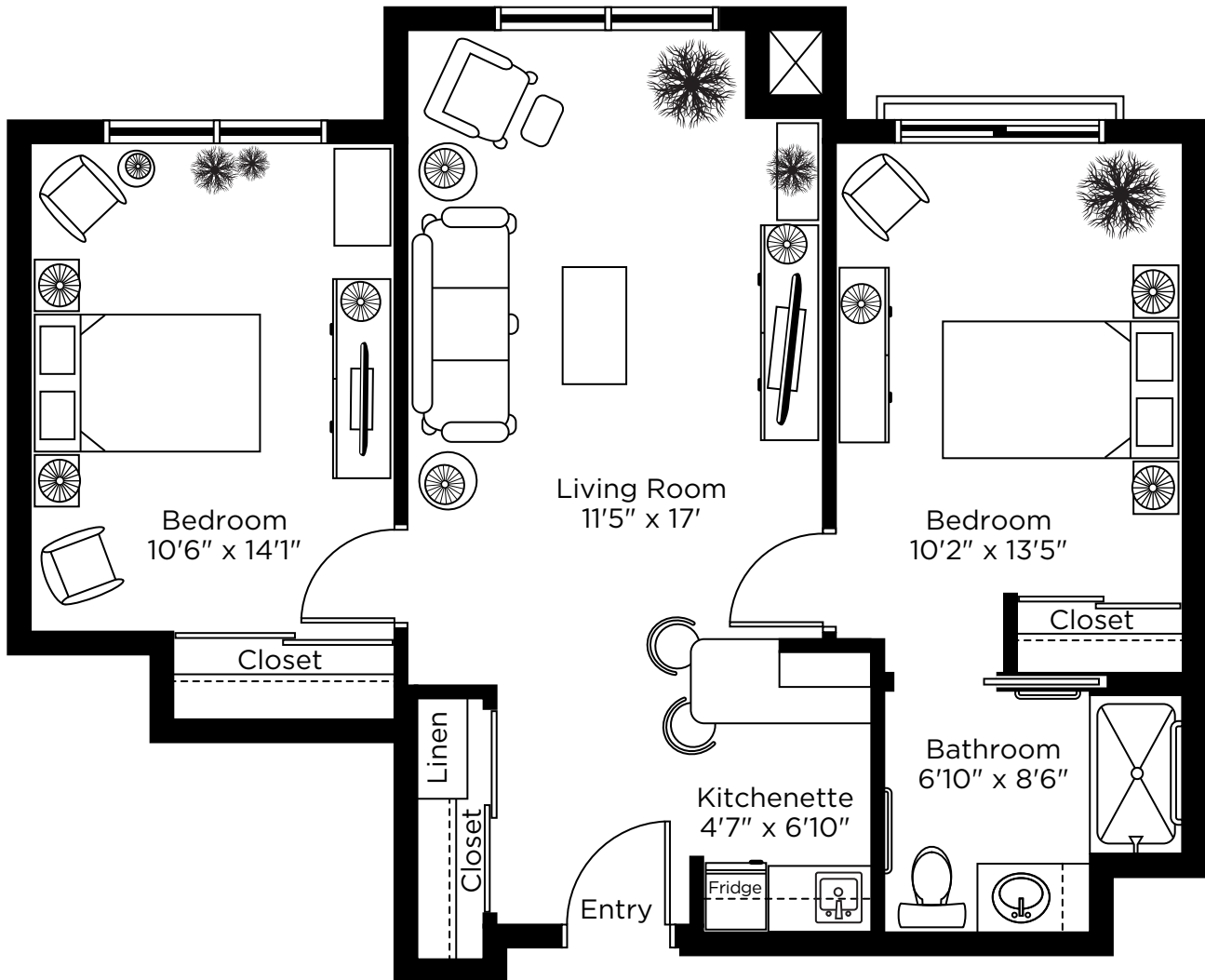
# Suite Plans

## TWO BEDROOM

ALL ILLUSTRATIONS ARE ARTIST'S CONCEPT PLANS AND SPECIFICATIONS MAY CHANGE WITHOUT NOTICE.  
ACTUAL USABLE FLOOR SPACE MAY VARY FROM STATED FLOOR AREA. E & O.E.

# Petticoat

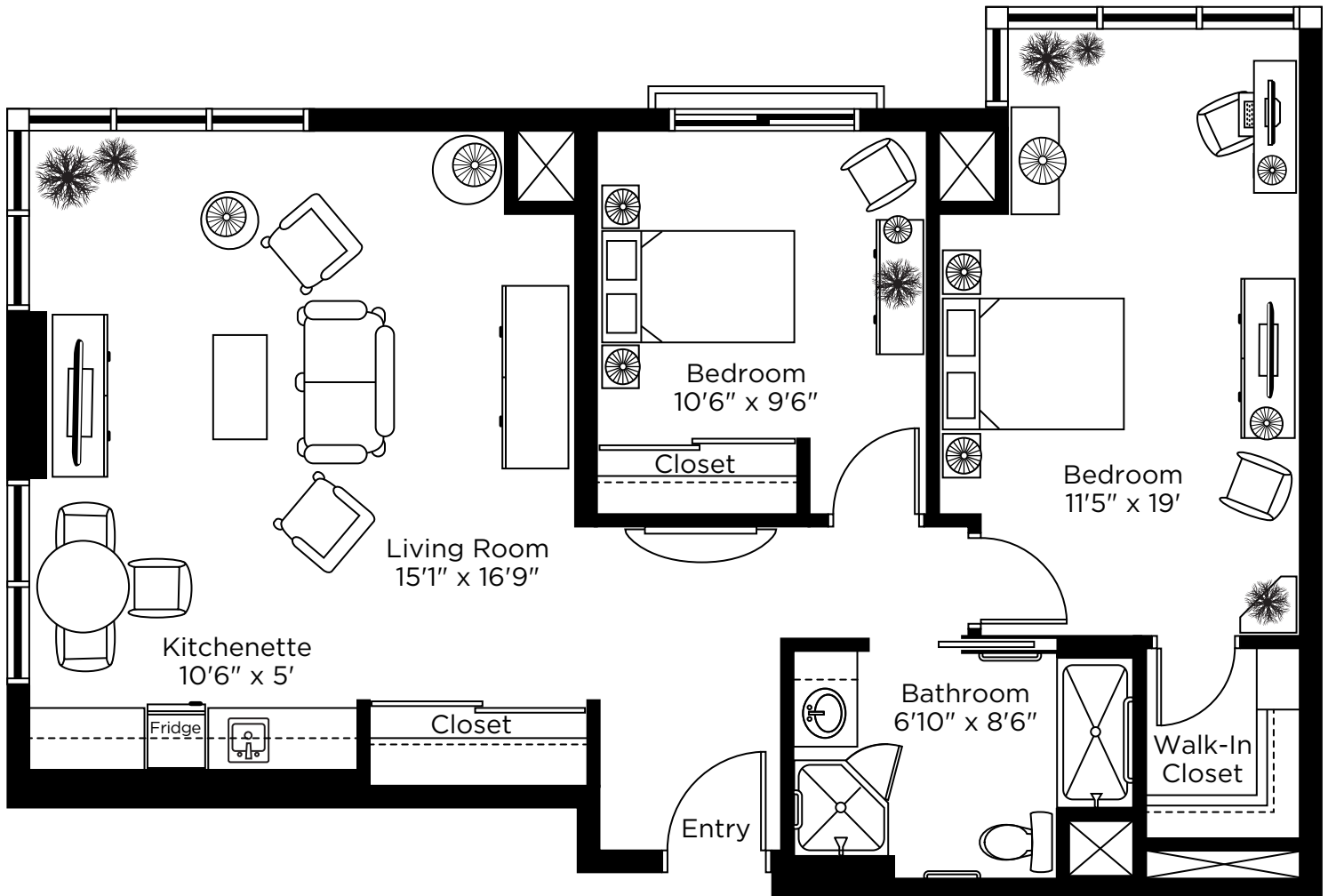
Two Bedroom  
798 sq.ft.



ALL ILLUSTRATIONS ARE ARTIST'S CONCEPT PLANS AND SPECIFICATIONS MAY CHANGE WITHOUT NOTICE.  
ACTUAL USABLE FLOOR SPACE MAY VARY FROM STATED FLOOR AREA. E & O.E.

# Greenwood

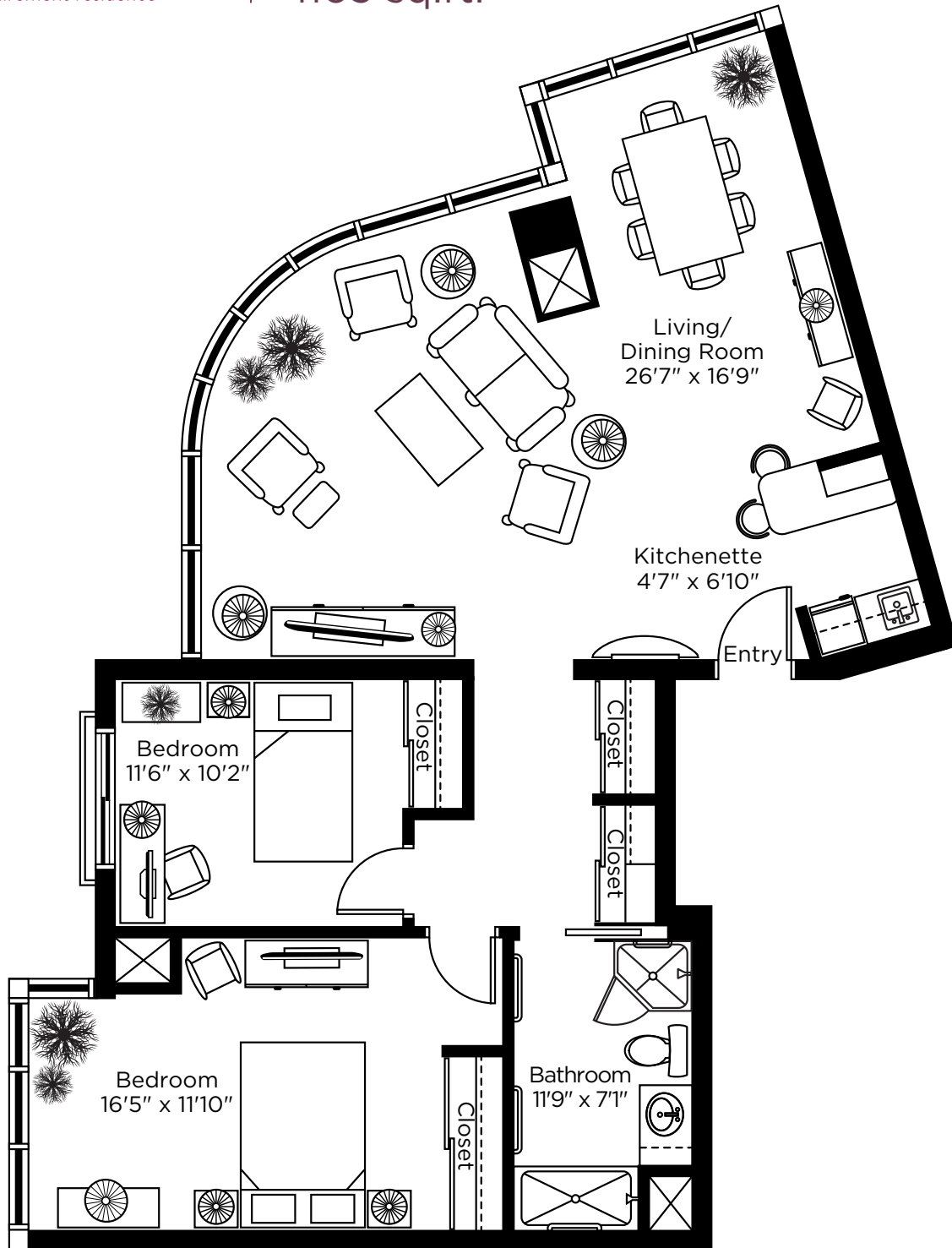
Two Bedroom  
1005 sq.ft.



ALL ILLUSTRATIONS ARE ARTIST'S CONCEPT PLANS AND SPECIFICATIONS MAY CHANGE WITHOUT NOTICE.  
ACTUAL USABLE FLOOR SPACE MAY VARY FROM STATED FLOOR AREA. E & O.E.

# Brougham

Two Bedroom  
1165 sq.ft.



ALL ILLUSTRATIONS ARE ARTIST'S CONCEPT PLANS AND SPECIFICATIONS MAY CHANGE WITHOUT NOTICE.  
ACTUAL USABLE FLOOR SPACE MAY VARY FROM STATED FLOOR AREA. E & O.E.