



making people's lives BETTER



Where **modern elegance**
and **breathtaking views**
create a retirement retreat
like no other.

PART OF THE REPENTIGNY COMMUNITY

Perched along the banks of the St. Lawrence River in Repentigny, Chartwell Azalis is a retirement community combining contemporary elegance with everyday comfort. Bathed in natural light, our modern retirement residence is thoughtfully designed to create a harmonious setting where the tranquility of nature meets the energy of urban life. With independent living, assisted living, and memory care options available, we offer bright, spacious suites with breathtaking views. Every detail—from our inviting

common spaces to our engaging programs and activities—encourages a lively sense of community where connection and joy thrive.

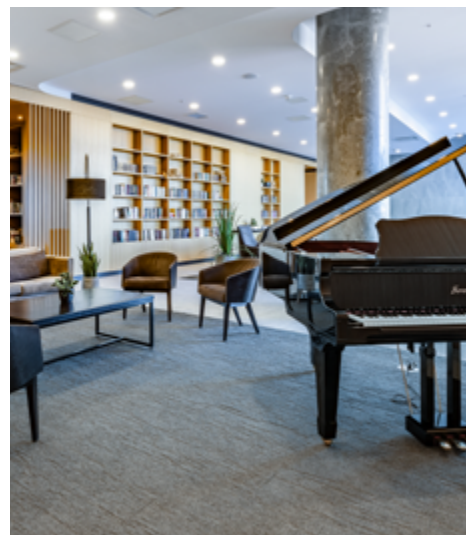
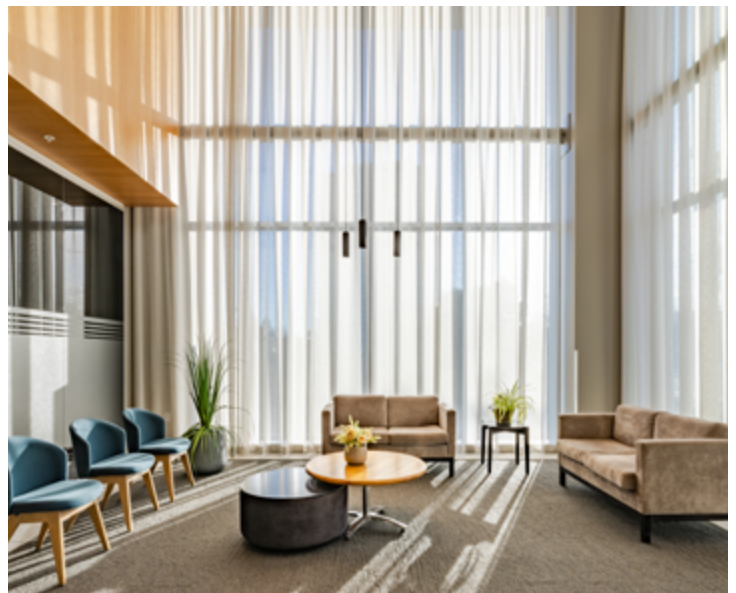
Nestled in a quiet residential neighbourhood, our residence is nearby shops, cafés, restaurants, and healthcare services—everything you need just moments away. Parks and green spaces also invite peaceful strolls, sunny picnics, and moments of relaxation surrounded by nature.

OUR UNIQUE LIFESTYLE

Step inside Chartwell Azalis, where soft light, refined finishes, and inviting spaces come together to create a true sense of harmony. Our shared spaces invite you to live each moment at your own pace, whether it's a refreshing swim in the morning, a fitness class in the afternoon, a film in the theatre, or unhurried conversations on the terrace as the sun sets over the river.

Furthermore, our private suites—from studios to spacious three-bedroom apartments—combine timeless elegance with thoughtful design and quality craftsmanship. Beyond your windows, the calm flow of the St. Lawrence and nearby green spaces add beauty to each day, while convenient amenities keep life effortless. Here, peace of mind originates from our serene surroundings and the attentive care of a team that's always there when you need them. At Chartwell Azalis, life feels simple, fulfilling, and beautifully in tune with you.

Explore our Living at Chartwell brochure to learn more about dining, lifestyle activities and personalized care services.



FACTS & FEATURES



IN THE NEIGHBOURHOOD

- Walking paths
- Outdoor greenspace
- Groceries
- Mall
- Pharmacy
- Public transportation
- Restaurants

ACTIVITIES

- LiveNow program
- Educational activities
- Cultural activities
- Piano
- Yoga

DINING SERVICES

- Diversified menu
- À la carte menu
- Meals for guests*
- Flexible dining times
- Themed dinner*
- Open-seating dining

CARE SERVICES

- Medication supervision/administration*
- Visiting Massage Therapist*
- Assistance with activities of daily living*
- On-site Nurse

AMENITIES

- Gym
- Billard
- Library
- Dining room
- Golf simulator
- Pool
- Terrace
- Swings

CHARTWELL AZALIS

256 Notre-Dame Street, Repentigny, Québec, J6A 0C5 • **438-228-2248**

CHARTwell.com