



CHARTwell

PARK PLACE

retirement residence

15055 Yonge Street, Aurora
289-648-4113

Suite Plans

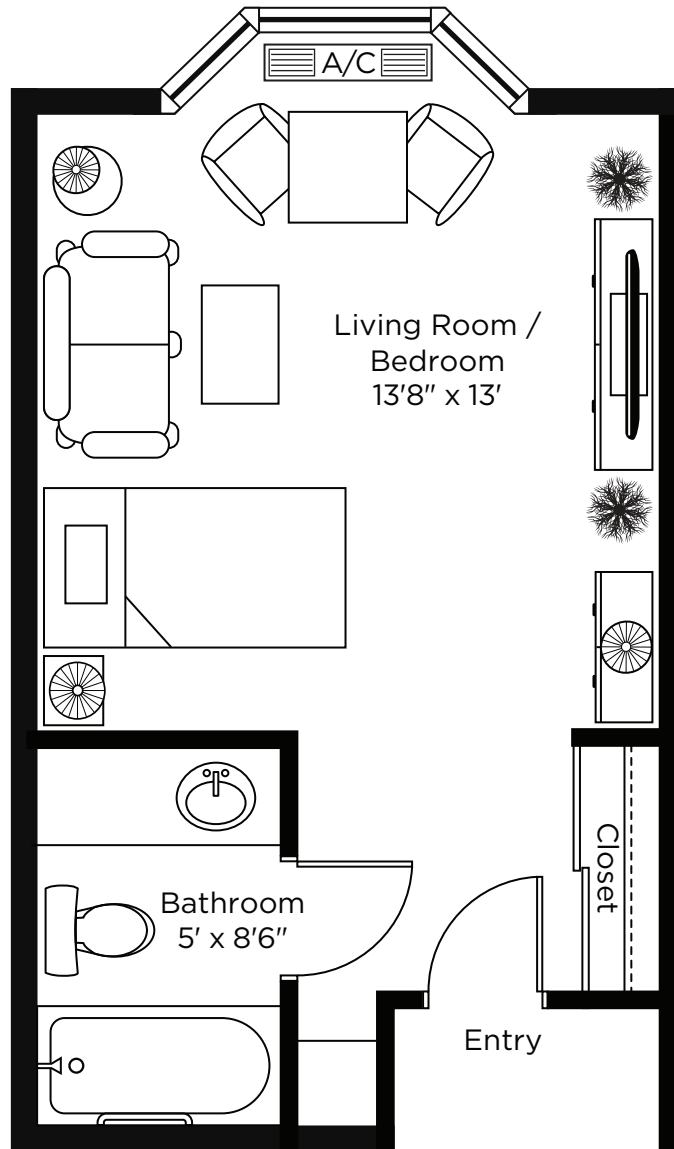
STUDIO

ALL ILLUSTRATIONS ARE ARTIST'S CONCEPT PLANS AND SPECIFICATIONS MAY CHANGE WITHOUT NOTICE.
ACTUAL USABLE FLOOR SPACE MAY VARY FROM STATED FLOOR AREA. E & O.E.

The Highlander

Studio

324 sq.ft.

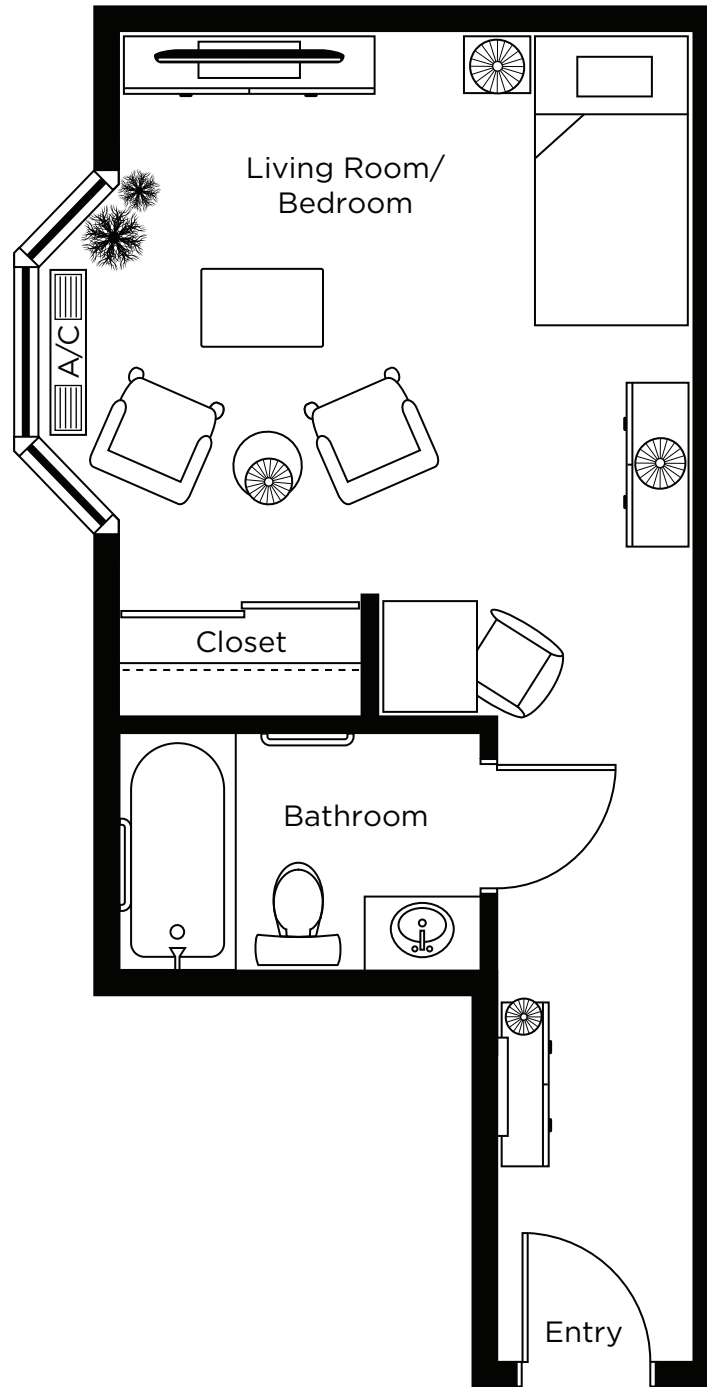


ALL ILLUSTRATIONS ARE ARTIST'S CONCEPT PLANS AND SPECIFICATIONS MAY CHANGE WITHOUT NOTICE.
ACTUAL USABLE FLOOR SPACE MAY VARY FROM STATED FLOOR AREA. E & O.E.

The Simcoe

Studio

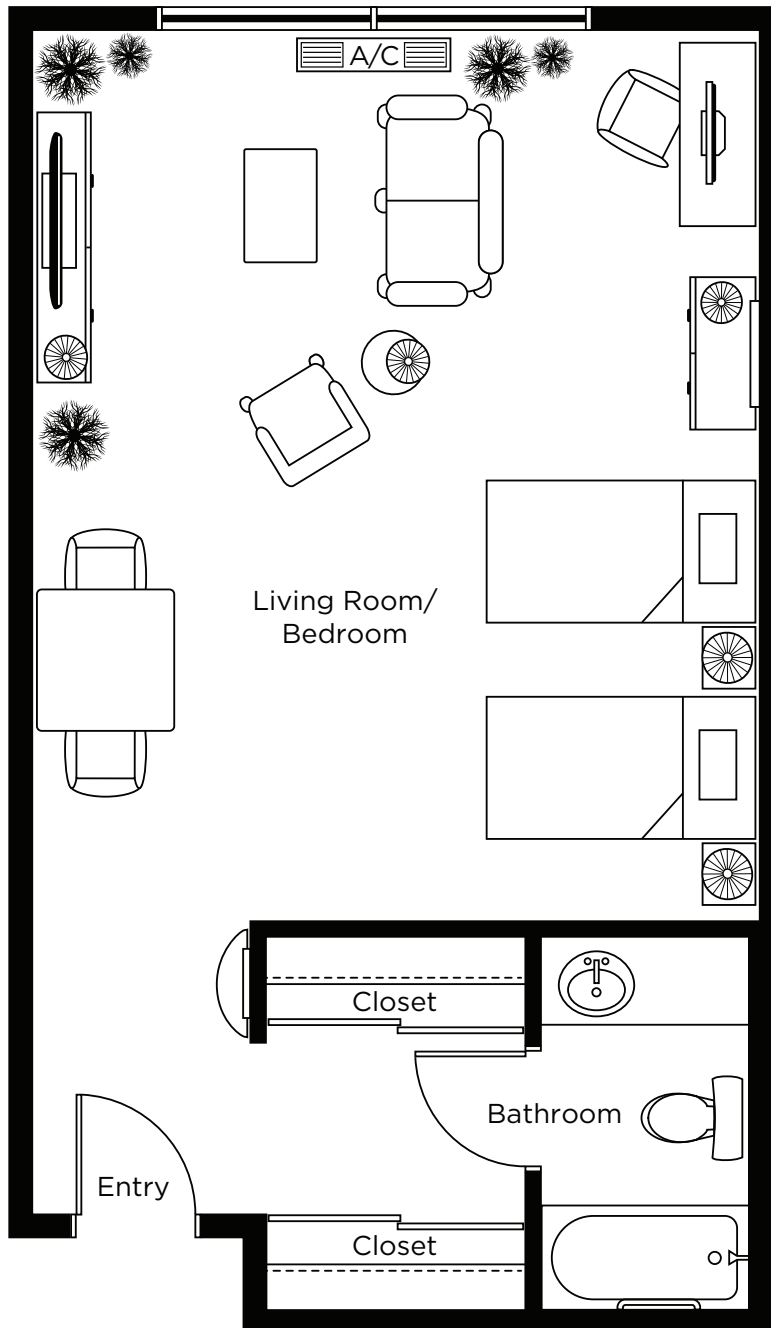
331 sq.ft.



ALL ILLUSTRATIONS ARE ARTIST'S CONCEPT PLANS AND SPECIFICATIONS MAY CHANGE WITHOUT NOTICE.
ACTUAL USABLE FLOOR SPACE MAY VARY FROM STATED FLOOR AREA. E & O.E.

The Wellington

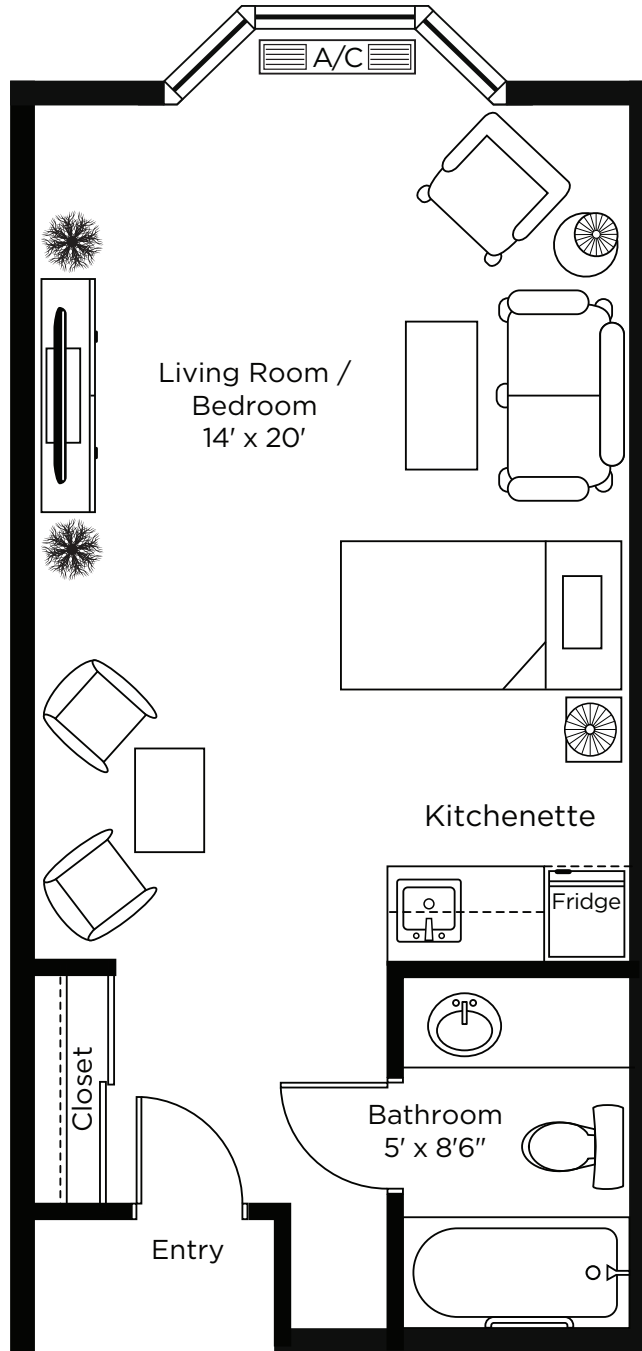
Studio
535 sq.ft.



ALL ILLUSTRATIONS ARE ARTIST'S CONCEPT PLANS AND SPECIFICATIONS MAY CHANGE WITHOUT NOTICE. ACTUAL USABLE FLOOR SPACE MAY VARY FROM STATED FLOOR AREA. E & O.E.

The Victoria

Studio
404 sq.ft.



ALL ILLUSTRATIONS ARE ARTIST'S CONCEPT PLANS AND SPECIFICATIONS MAY CHANGE WITHOUT NOTICE.
ACTUAL USABLE FLOOR SPACE MAY VARY FROM STATED FLOOR AREA. E & O.E.