



**CHARTwell**

**SOUTHWIND**

retirement residence

1645 Paris Street, Sudbury  
**705-885-9644**

# Suite Plans

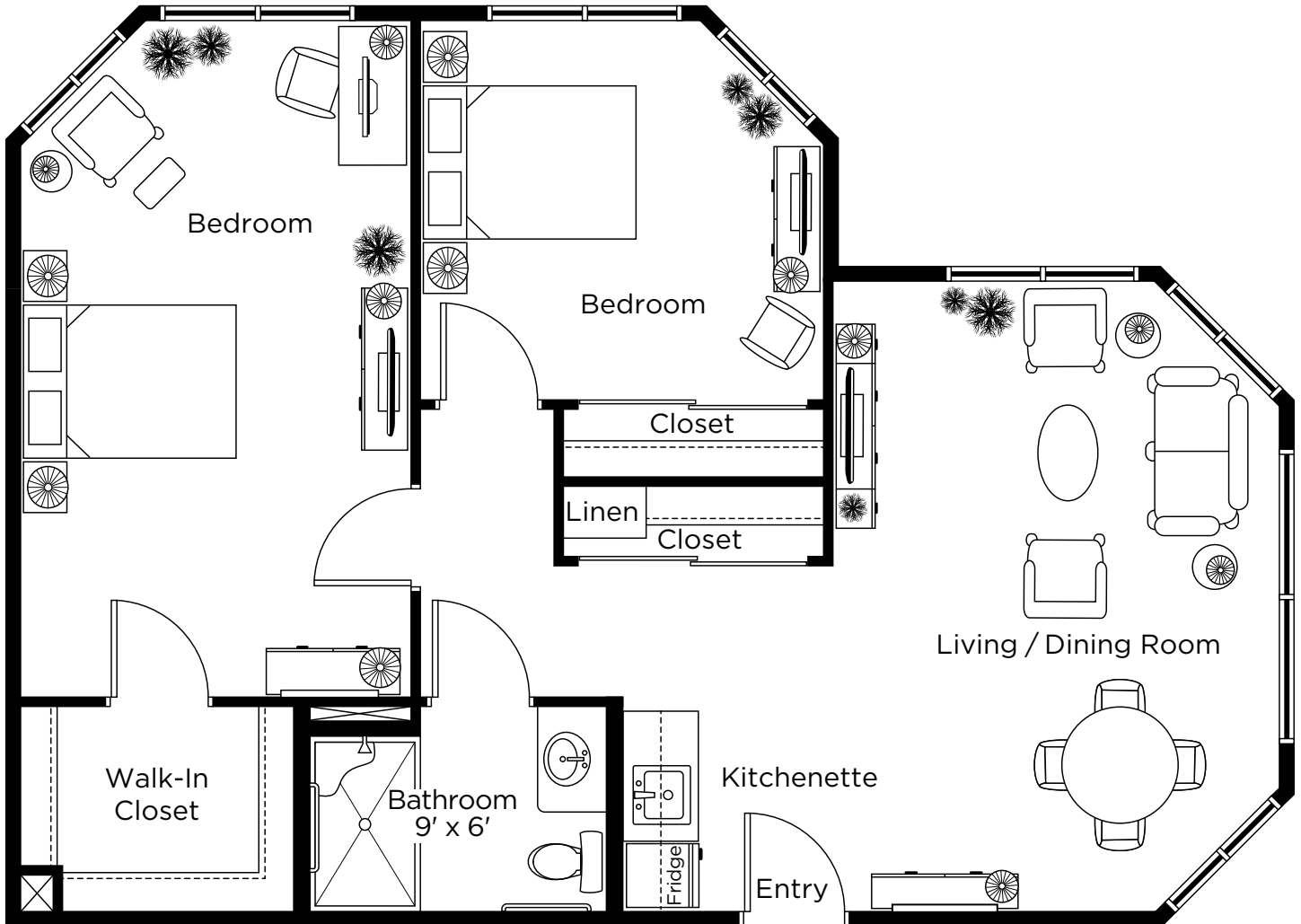
## TWO BEDROOM

ALL ILLUSTRATIONS ARE ARTIST'S CONCEPT PLANS AND SPECIFICATIONS MAY CHANGE WITHOUT NOTICE.  
ACTUAL USABLE FLOOR SPACE MAY VARY FROM STATED FLOOR AREA. E & O.E.

# Type C-1

Two Bedroom  
954 sq.ft.

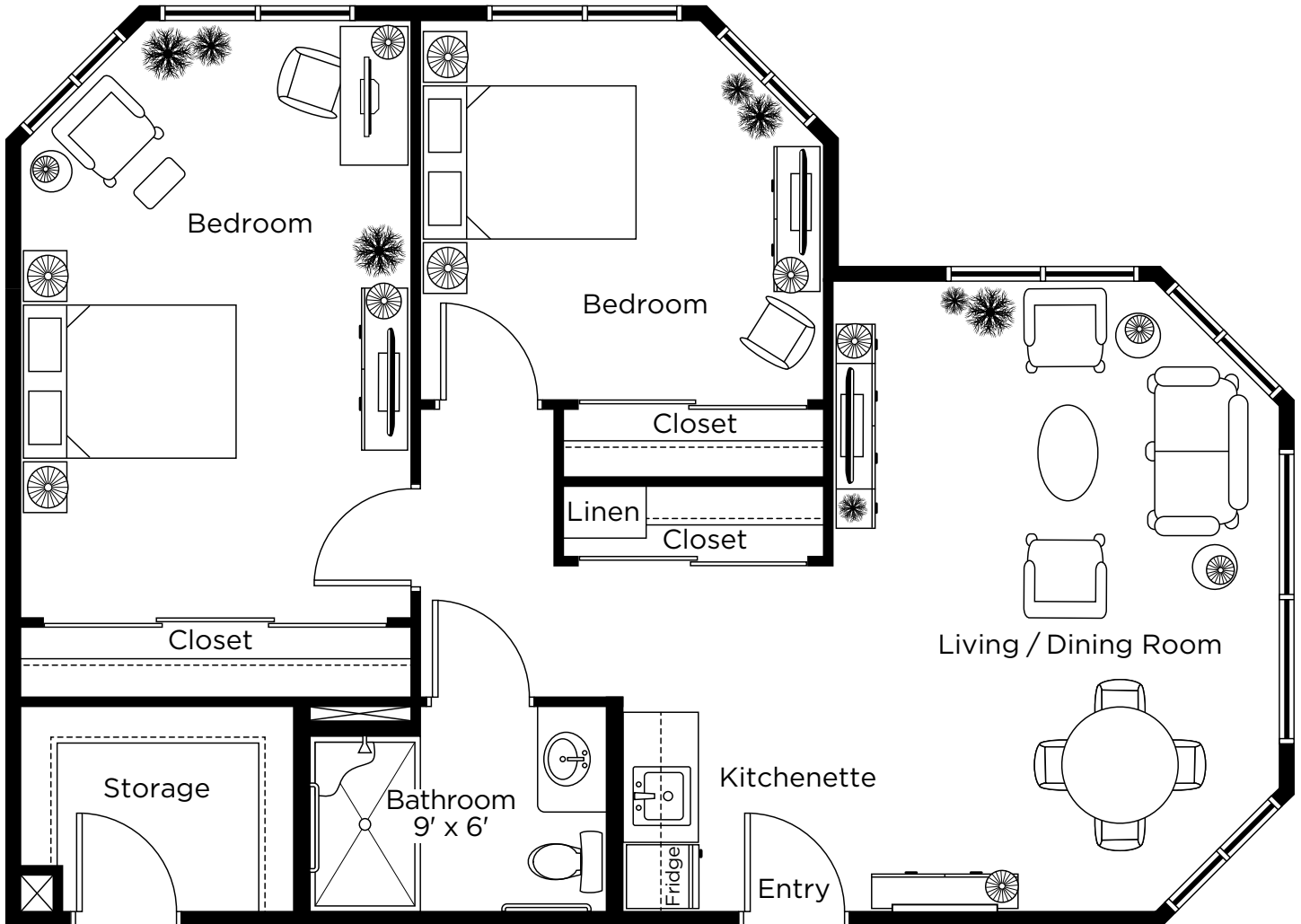
Unit: 213, 234



# Type C-2

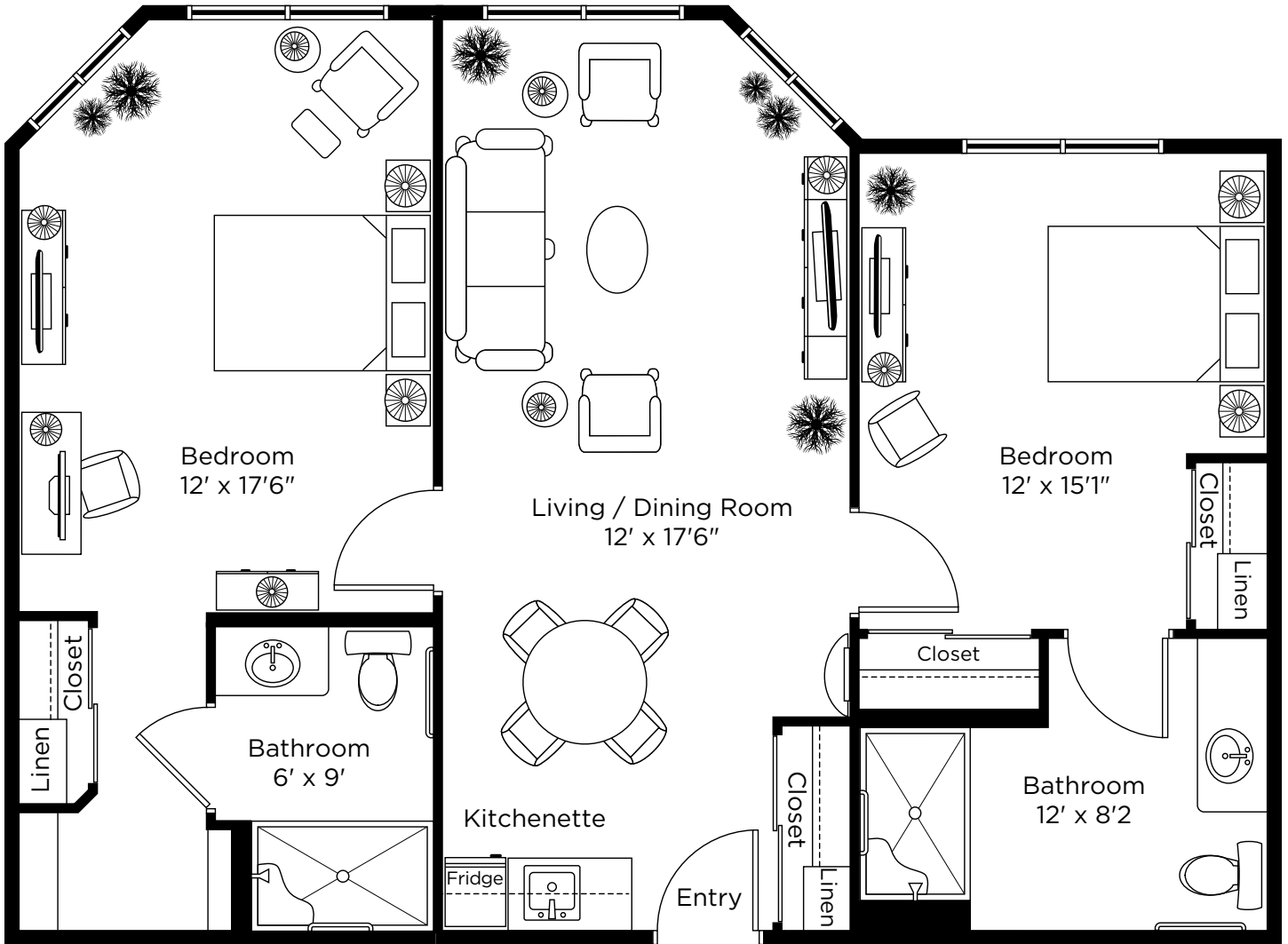
Two Bedroom  
954 sq.ft.

Unit: 112, 228



# Suite 122

Two Bedroom  
892 sq.ft.



ALL ILLUSTRATIONS ARE ARTIST'S CONCEPT PLANS AND SPECIFICATIONS MAY CHANGE WITHOUT NOTICE. ACTUAL USABLE FLOOR SPACE MAY VARY FROM STATED FLOOR AREA. E & O.E.