



CHARTwell
LYNNWOOD
retirement residence



making people's lives BETTER



“Lead a **social and active retirement** in a home with a strong reputation in **Chilliwack.**”

PART OF OUR LOCAL COMMUNITY SINCE 1997

Chartwell Lynnwood is an active and vibrant retirement community located in thriving downtown Chilliwack, ideal for seniors looking for the peacefulness of rural living paired with the urban conveniences of city living.

A major revitalization has swept through the city of Chilliwack, with new shops and restaurants for you to explore. Re-discover your community and its new offerings, or re-visit local staples such as

Leisure Landing. Let your feet guide you towards neighboring cultural centers and let your mind wander in nearby art galleries. For those who wish to stay active, Townsend Park is just next door, and you won't want to miss out on the gorgeous views of Mt. Cheam, the Eastern Hillside and Little Mountain. Chilliwack Hospital is also within walking distance of our residence.

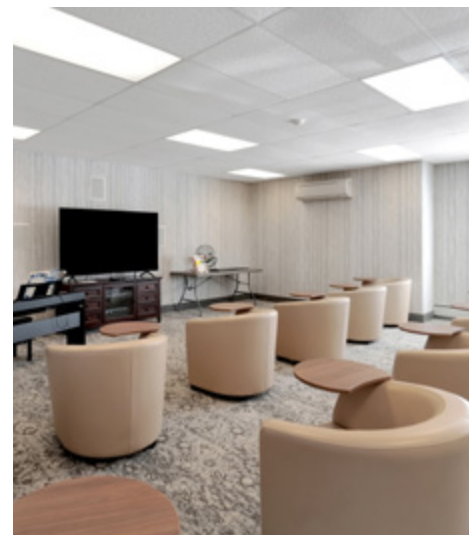
OUR UNIQUE LIFESTYLE

You'll find our bright and airy open-concept amenities and beautiful greenspace to be refreshing. From themed celebrations in our large bistro to group activities in the multipurpose room, you can lead the active retirement you desire. Step outside to have your morning coffee on the patio or get involved with our gardening club just waiting for your green thumb - the choice is yours!

Our spacious suites feature full kitchens, bright lighting and patios or balconies. Whether you choose a studio, one- or two-bedroom suite, you'll have access to our flexible dining options featuring a wide selection of tasty and nutritious meals. For your convenience, we also offer secured, covered parking, storage lockers and transportation services for errands and appointments.

As your needs evolve, our care support evolves too. With Fraser Health offering home care support, you can age comfortably with us.

Explore our Living at Chartwell brochure to learn more about dining, lifestyle activities and personalized care services.



FACTS & FEATURES



IN THE NEIGHBOURHOOD

- Grocery stores
- Restaurants
- Banks
- Pharmacies
- Hospital
- Transit
- Shopping
- Medical clinics
- Coffee shops

ACTIVITIES

- LiveNow program
- Cultural activities
- Exercise
- Social and recreational programs
- Live entertainment
- Gardening
- Educational activities
- Day trips*

DINING SERVICES

- Diversified menu
- Freshly-prepared snacks
- Catering*
- À la carte menu
- Themed dinners*
- Open-seating dining
- Meals for guests*

CARE SERVICES

- Home care**
- Blood pressure clinic*
- Visiting Podiatrist*
- Companionship*
- Lab services*
- Support groups
- Audiology/hearing clinic*
- Mobile Massage Therapist*






AMENITIES

- Dining room
- Bistro/cafe
- Multi-functional room
- Private dining room
- Activity room
- Library
- Bar/lounge
- Fitness room
- Outdoor greenspace

*Fee-for-service may apply.

**Service provided by third party organization



-  Grocery store
-  Bank
-  Restaurant
-  Shopping
-  Coffee shop
-  Library
-  Liquor store
-  Hospital
-  Cultural centre
-  Community centre/
sports park

CHARTWELL LYNNWOOD

9168 Corbould Street, Chilliwack, BC V2P 8A1 • 604-426-0454