




making people's lives BETTER





Enjoy your retirement years  
with **exceptional service**,  
**immaculate green space** and  
**beautiful views.**

## PART OF OUR LOCAL COMMUNITY SINCE 2006

Chartwell Chatsworth Retirement Residence is situated in a residential neighbourhood in the heart of the Okanagan Valley. Our well-established home in central Kelowna is like a serene oasis tucked away in the city, nearby many walkable amenities, retailers, farmer's markets and Mission Creek Park. We are known for our worry-free retirement lifestyle, exceptional customer service and strong sense of community.

Our suites are the perfect place to relax and unwind when you aren't dining, participating in

an activity or enjoying the company of friends. We offer a wide selection of well-appointed suite types, including contemporary studio, one- and two-bedroom suites—all featuring patios or balconies—as well as independent bungalows with two spacious bedrooms, a full kitchen and in-suite laundry facilities. No matter your choice, you'll benefit from exclusive mountain vistas or panoramic views of our immaculate gardens and green space.

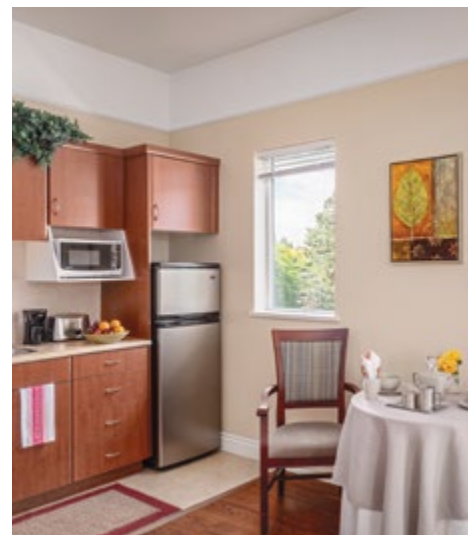
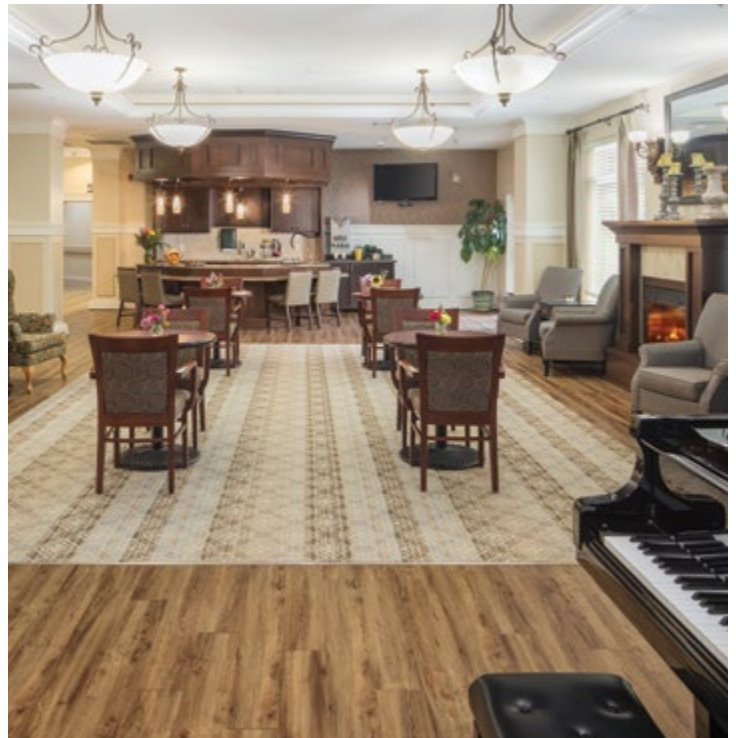


## OUR UNIQUE LIFESTYLE

We believe your retirement years should be spent doing the things you love with the people dearest to you. To free up your time and energy to pursue what makes you happiest, we offer convenient services such as delicious meal options, housekeeping, transportation services and even on-site hairdressing. Here, you can choose from our independent living or assisted living services offered at our main retirement community, or opt to lead the active and independent lifestyle you desire in our modern bungalows located onsite.

Additionally, you can choose to benefit from a wide variety of social experiences, fitness classes, hobby and arts groups, scheduled outings and even live entertainment. Don't be surprised if you find yourself enjoying the great outdoors in our lovely outdoor space with walking paths, playing billiards, gathered around the grand piano, or having a coffee or a glass of wine in our lounge. The choice is yours!

**Explore our Living at Chartwell brochure to learn more about dining, lifestyle activities and personalized care services.**



# FACTS & FEATURES



## IN THE NEIGHBOURHOOD

- Grocery stores
- Pharmacies
- Shopping
- Restaurants
- Hospital
- Medical clinics
- Banks
- Transit
- Coffee shops

## ACTIVITIES

- LiveNow program
- Educational activities
- Cultural activities
- Social and recreational programs
- Gardening
- Exercise
- Live entertainment
- Crafts
- Billiards

## DINING SERVICES

- Diversified menu
- À la carte menu
- Country kitchen
- Open seating dining
- Flexible dining times
- Themed dinner\*
- Meals for guests\*
- Catering\*
- Freshly prepared snacks

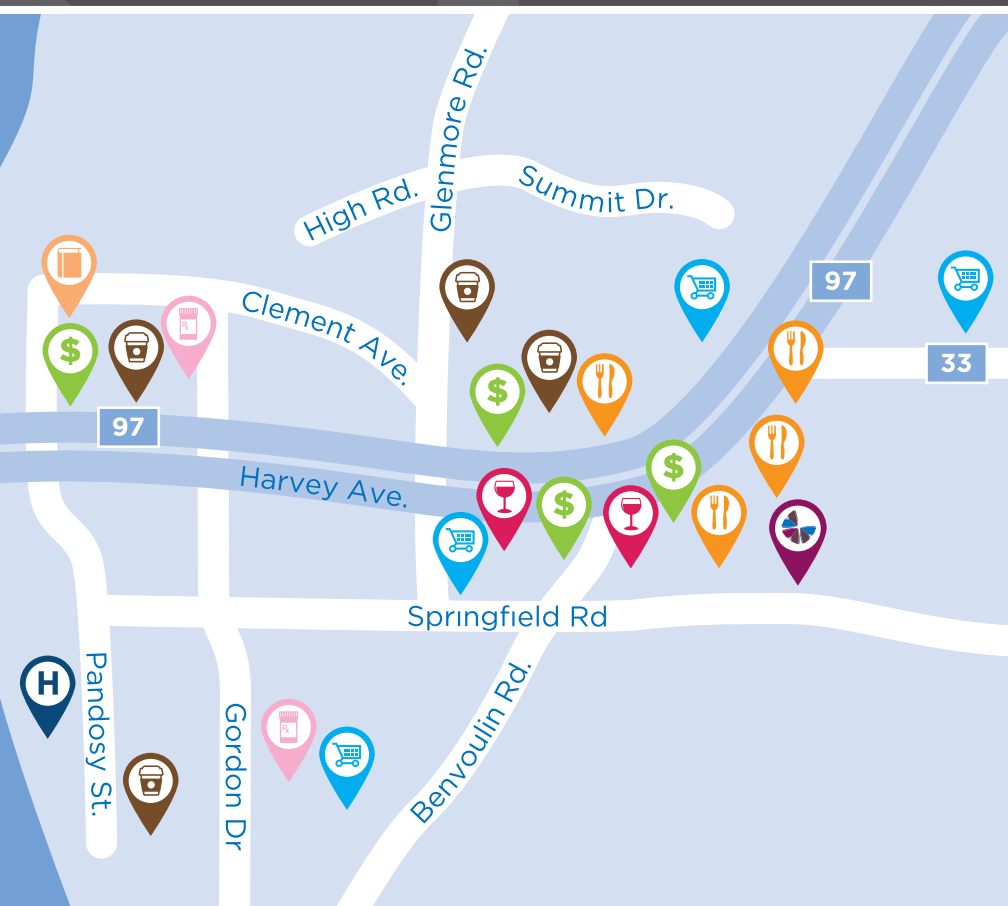
## CARE SERVICES









- Medication supervision/administration\*
- Assistance with activities of daily living\*
- On-site Nurse
- Audiology/hearing clinic\*

## AMENITIES

- Dining room
- Private dining room
- Activity room
- Walking paths
- Fitness room
- Multi-functional room
- Library
- Lounge
- Hair salon

\*Fee-for-service may apply.



-  Bank
-  Coffee shop
-  Grocery store
-  Hospital
-  Library
-  Liquor store
-  Pharmacy
-  Restaurant

## CHARTWELL CHATSWORTH

1831 Parkview Crescent, Kelowna, BC V1X 7G7 • 778-738-0623