



CHARTwell
EAU CLAIRE
care residence



making people's lives BETTER[®]



Retire on Bow River in a residence offering **personalized support that adapts with your unique care needs.**

PART OF OUR LOCAL COMMUNITY SINCE 2005

Walk through the doors of Chartwell Eau Claire into our bright lobby and you'll find you're instantly embraced by a sense of warmth, light and activity. Located in the heart of downtown Calgary, our continuum of care residence has an excellent reputation in the local community due to our top-quality care services delivered by friendly staff. We offer Private Supportive Living, Designated Supportive Living and memory care accommodations and services, empowering you

or a loved one to comfortably age in place without the need for multiple moves.

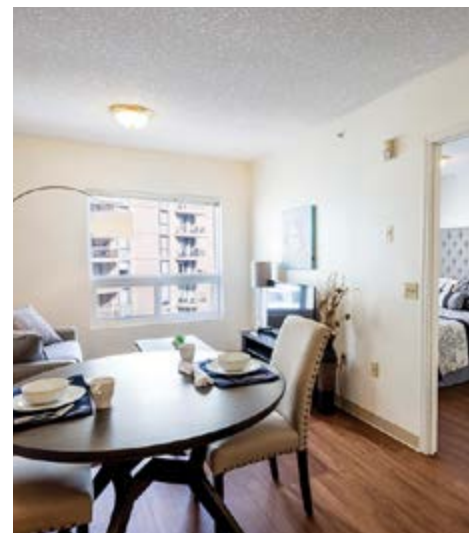
Our retirement community recently underwent some beautiful renovations that further added to our comfortable, family home feel, where residents enjoy the hustle and bustle of an engaging community atmosphere. For family, visits are made easy due to our convenient downtown location and free heated underground parking.

OUR UNIQUE LIFESTYLE

Our dedicated staff pride themselves on delivering care that reflects each person's unique needs and preferences. Our Private Supportive Living environment is designed to make you feel comfortable and worry-free so you can focus on the daily activities that bring you happiness, such as delicious and nutritious meals, staff-accompanied walks along nearby river pathways to Peace Bridge, or an evening of musical entertainment. We offer a variety of well-appointed suite layouts with lovely river and downtown views, including studio, one- and two-bedroom suites.

What truly sets us apart is our long-standing team of staff, higher staff-to-resident ratios, as well as a robust team of visiting health care professionals, including daily physician visits, occupational therapists and weekly social workers. Together, we are committed to making your life healthier, happier and more fulfilling.

Explore our Living at Chartwell brochure to learn more about dining, lifestyle activities and personalized care services.



FACTS & FEATURES



IN THE NEIGHBOURHOOD

- Grocery store
- Shopping
- Restaurant
- Bank
- Transit
- Coffee shop
- Place of worship
- Park
- Library

ACTIVITIES

- LiveNow program
- Cultural activities
- Social and recreational programs
- Day trips*
- Exercise
- Live entertainment
- Yoga
- Crafts
- Pet visits

DINING SERVICES

- Diversified menu
- À la carte menu
- Open seating dining
- Meals for guests*
- Catering*
- Family dinner
- Freshly prepared snacks
- Wine service

CARE SERVICES









- On-site Nurse
- Pharmacy*
- Physiotherapy*
- Physician visits*
- Lab services*

AMENITIES

- Dining room
- Private dining room*
- Bar/lounge
- Bistro/cafe
- Activity room
- Movie theatre
- Library
- Walking paths
- Wellness centre

*Fee-for-service may apply.



-  Grocery store
-  Bank
-  Coffee shop
-  Pharmacy
-  Library
-  Place of worship
-  Restaurant
-  Liquor store

CHARTWELL EAU CLAIRE CARE RESIDENCE

301 7th Street SW, Calgary T2P 1Y6 • 587-287-3944