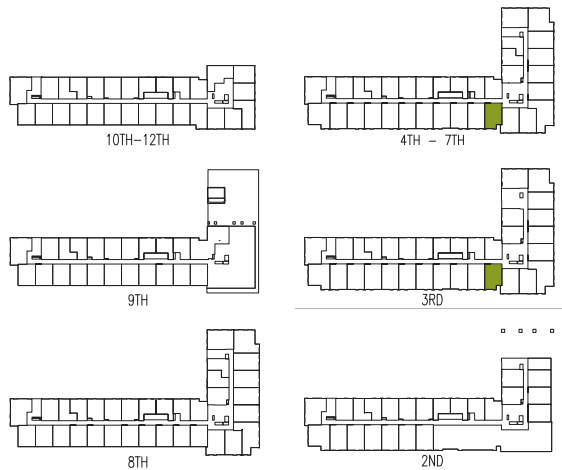
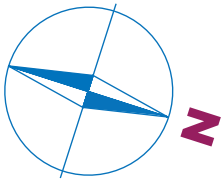


THE SUMACH

by CHARTwell

ONE BEDROOM
+ DEN - A
646 SQ.FT.



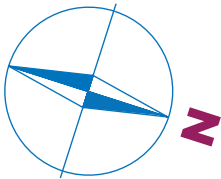
All areas and stated room dimensions are approximate. Floor area measured in accordance with Tarion Warranty Corporation bulletin #22. Actual living area will vary from the stated floor area. Patio and Terrace pavers will vary from how they are shown in the marketing floorplans. The renter acknowledges that the actual unit rented may be a reverse layout to the plan shown. Illustration is artist concept. E. & O.E.



THE SUMACH

by CHARTwell

ONE BEDROOM
+ DEN - B
646 SQ.FT.



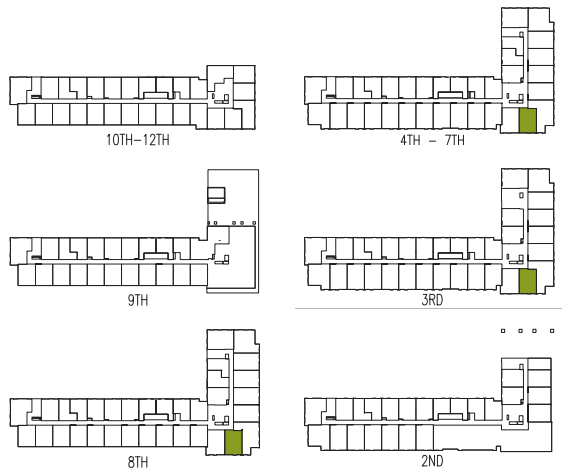
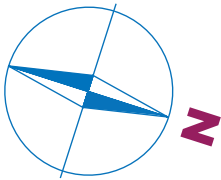
All areas and stated room dimensions are approximate. Floor area measured in accordance with Tarion Warranty Corporation bulletin #22. Actual living area will vary from the stated floor area. Patio and Terrace pavers will vary from how they are shown in the marketing floorplans. The renter acknowledges that the actual unit rented may be a reverse layout to the plan shown. Illustration is artist concept. E. & O.E.



THE SUMACH

by CHARTwell

ONE BEDROOM
+ DEN - C
651 SQ.FT.



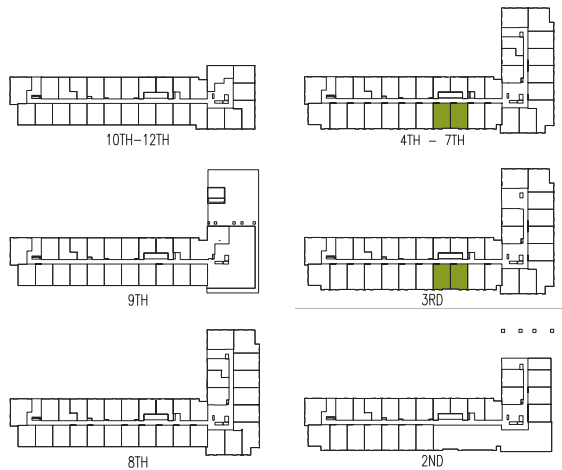
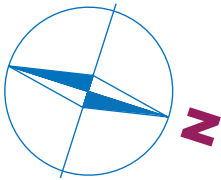
All areas and stated room dimensions are approximate. Floor area measured in accordance with Tarion Warranty Corporation bulletin #22. Actual living area will vary from the stated floor area. Patio and Terrace pavers will vary from how they are shown in the marketing floorplans. The renter acknowledges that the actual unit rented may be a reverse layout to the plan shown. Illustration is artist concept. E. & O.E.



THE SUMACH

by CHARTwell

ONE BEDROOM
+ DEN - D
674 SQ.FT.



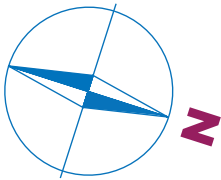
All areas and stated room dimensions are approximate. Floor area measured in accordance with Tarion Warranty Corporation bulletin #22. Actual living area will vary from the stated floor area. Patio and Terrace pavers will vary from how they are shown in the marketing floorplans. The renter acknowledges that the actual unit rented may be a reverse layout to the plan shown. Illustration is artist concept. E. & O.E.



THE SUMACH

by CHARTwell

ONE BEDROOM
+ DEN - E
680 SQ.FT.



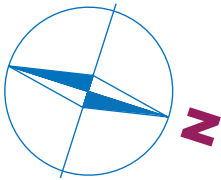
All areas and stated room dimensions are approximate. Floor area measured in accordance with Tarion Warranty Corporation bulletin #22. Actual living area will vary from the stated floor area. Patio and Terrace pavers will vary from how they are shown in the marketing floorplans. The renter acknowledges that the actual unit rented may be a reverse layout to the plan shown. Illustration is artist concept. E. & O.E.



THE SUMACH

by CHARTwell

ONE BEDROOM
+ DEN - F
680 SQ.FT.



All areas and stated room dimensions are approximate. Floor area measured in accordance with Tarion Warranty Corporation bulletin #22. Actual living area will vary from the stated floor area. Patio and Terrace pavers will vary from how they are shown in the marketing floorplans. The renter acknowledges that the actual unit rented may be a reverse layout to the plan shown. Illustration is artist concept. E. & O.E.

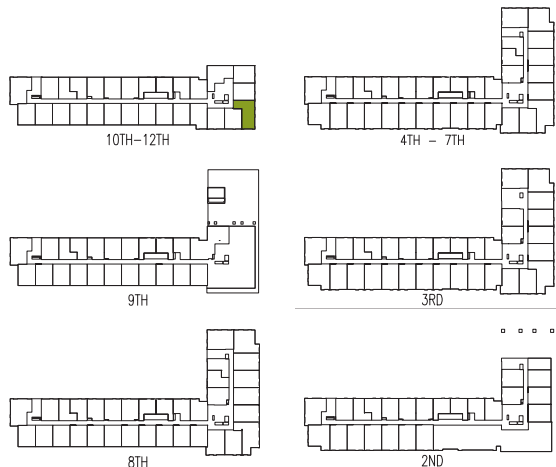
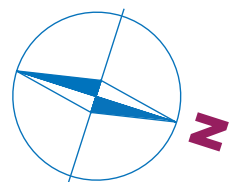


THE SUMACH

by CHARTwell



**ONE BEDROOM
+ DEN - G
698 SQ.FT.**



All areas and stated room dimensions are approximate. Floor area measured in accordance with Tarion Warranty Corporation bulletin #22. Actual living area will vary from the stated floor area. Patio and Terrace pavers will vary from how they are shown in the marketing floorplans. The renter acknowledges that the actual unit rented may be a reverse layout to the plan shown. Illustration is artist concept. E. & O.E.

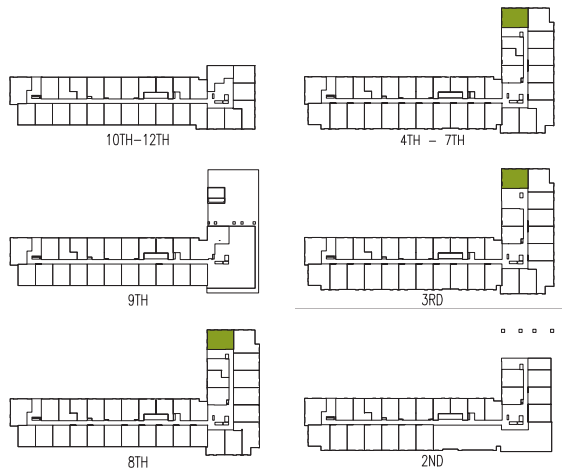
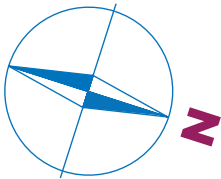


416-644-8912
Chartwell.com

THE SUMACH

by CHARTwell

ONE BEDROOM
+ DEN - H
797 SQ.FT.



All areas and stated room dimensions are approximate. Floor area measured in accordance with Tarion Warranty Corporation bulletin #22. Actual living area will vary from the stated floor area. Patio and Terrace pavers will vary from how they are shown in the marketing floorplans. The renter acknowledges that the actual unit rented may be a reverse layout to the plan shown. Illustration is artist concept. E. & O.E.



416-644-8912
Chartwell.com