



**CHARTwell**  
**HARTFORD**  
retirement residence



making people's lives BETTER



In the heart of Morrisburg,  
enjoy a **worry-free retirement  
lifestyle** in a village-like setting.

## PART OF OUR LOCAL COMMUNITY SINCE 1988

Chartwell Hartford Retirement Residence is tucked into the heart of Morrisburg, approximately a half hour west of Cornwall. Our traditional retirement community is as warm and welcoming as the village itself, with residents and staff perpetuating our feeling of small-town friendliness.

Our quaint residential neighbourhood with mature trees is conveniently located nearby a number of local amenities, including restaurants, liquor

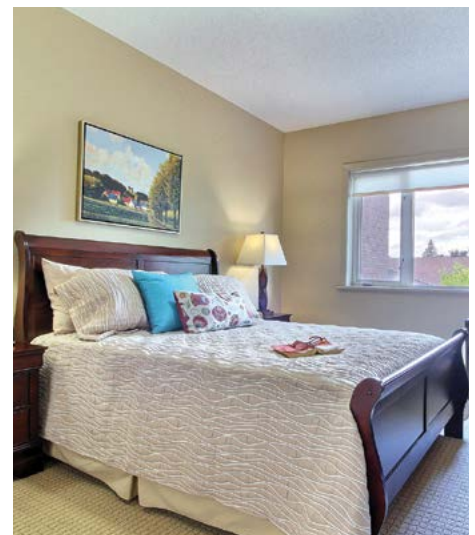
stores, coffee shops, retail shopping and places of worship—many within close walking distance. Here, you can enjoy the best of both worlds, as we're also down the street from pretty green space, including Morrisburg Waterfront Park, Morrisburg Beach and Public Dock, South Dundas Dog Park and Morrisburg Golf Club—all along the shores of the St. Lawrence River.

## OUR UNIQUE LIFESTYLE

The lifestyle at Chartwell Hartford is ideal for independent seniors, as well as those who may need additional support with aspects of daily life. We offer a host of convenient and valuable independent supportive living services that make life comfortable and worry-free, empowering you to spend your time and energy on the people and pursuits most important to you in your retirement years. Examples of independent supportive living services you may consider taking advantage of include medication management, assistance with your morning or evening routine, and much more. You'll find our dedicated, long-standing staff are here to make your life better and get to know you well so they can better support your health, happiness and peace of mind.

We offer studio and one-bedroom suites and a selection of on-site amenities that act as an extension of your personal space, including an open-concept dining room, activity room, bistro and outdoor space.

**Explore our Living at Chartwell brochure to learn more about dining, lifestyle activities and personalized care services.**



# FACTS & FEATURES



## IN THE NEIGHBOURHOOD

- Shopping
- Parks
- Royal Canadian Legion
- Medical clinics
- Dentists
- Theatres
- Banks
- Post offices

## ACTIVITIES

- Live entertainment
- Piano
- Exercise
- LiveNow program
- Social and recreational programs

## DINING SERVICES

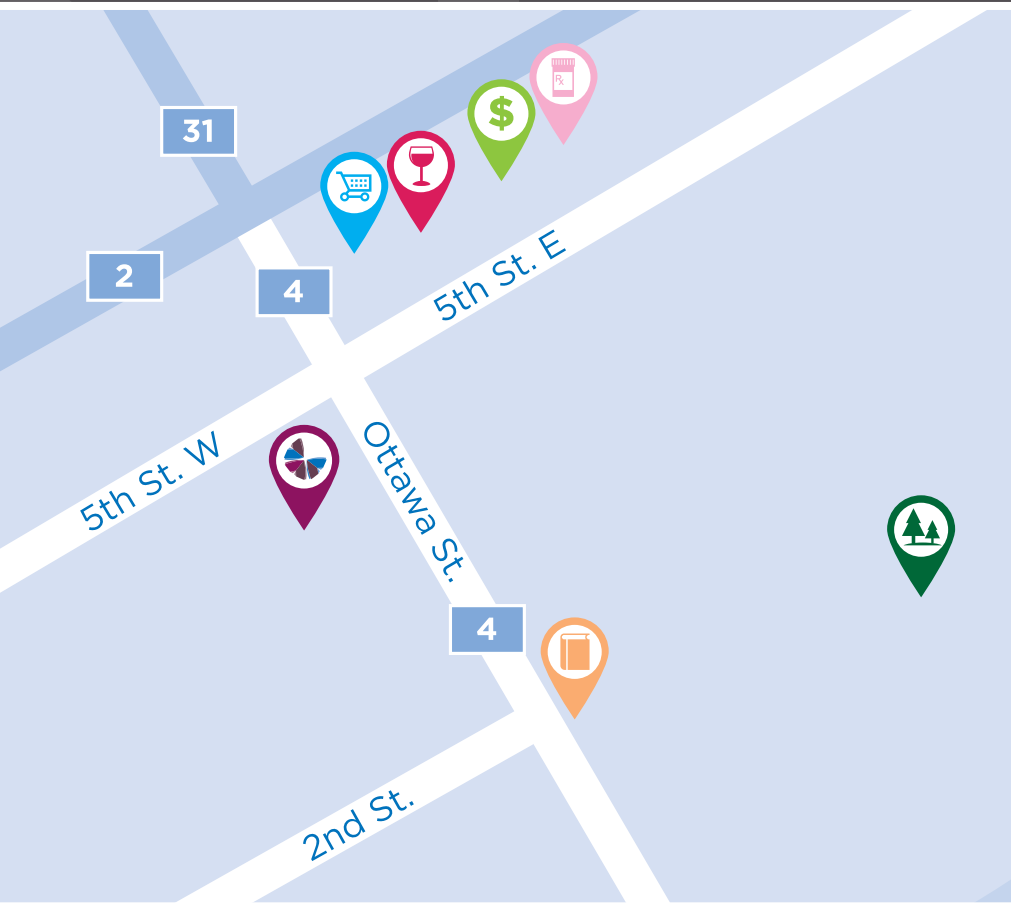
- À la carte menu
- Meals for guests\*
- Open-seating dining
- Catering\*
- Flexible dining times
- Family dinner



## CARE SERVICES

- Medication supervision/administration\*
- Assistance with activities of daily living\*
- Pharmacy
- Blood pressure clinic\*
- Physiotherapy\*
- Lab services\*
- On-call Nurse
- Care Assist Program

## AMENITIES

- Dining room
- Activity room
- Library
- Private dining room
- Fitness room
- Lounge
- Bistro/cafe
- TV room
- Outdoor greenspace



-  Bank
-  Grocery store
-  Library
-  Liquor store
-  Park
-  Pharmacy

**CHARTWELL HARTFORD**

3 Fifth Street West, Morrisburg, ON K0C 1X0 • 613-937-7274