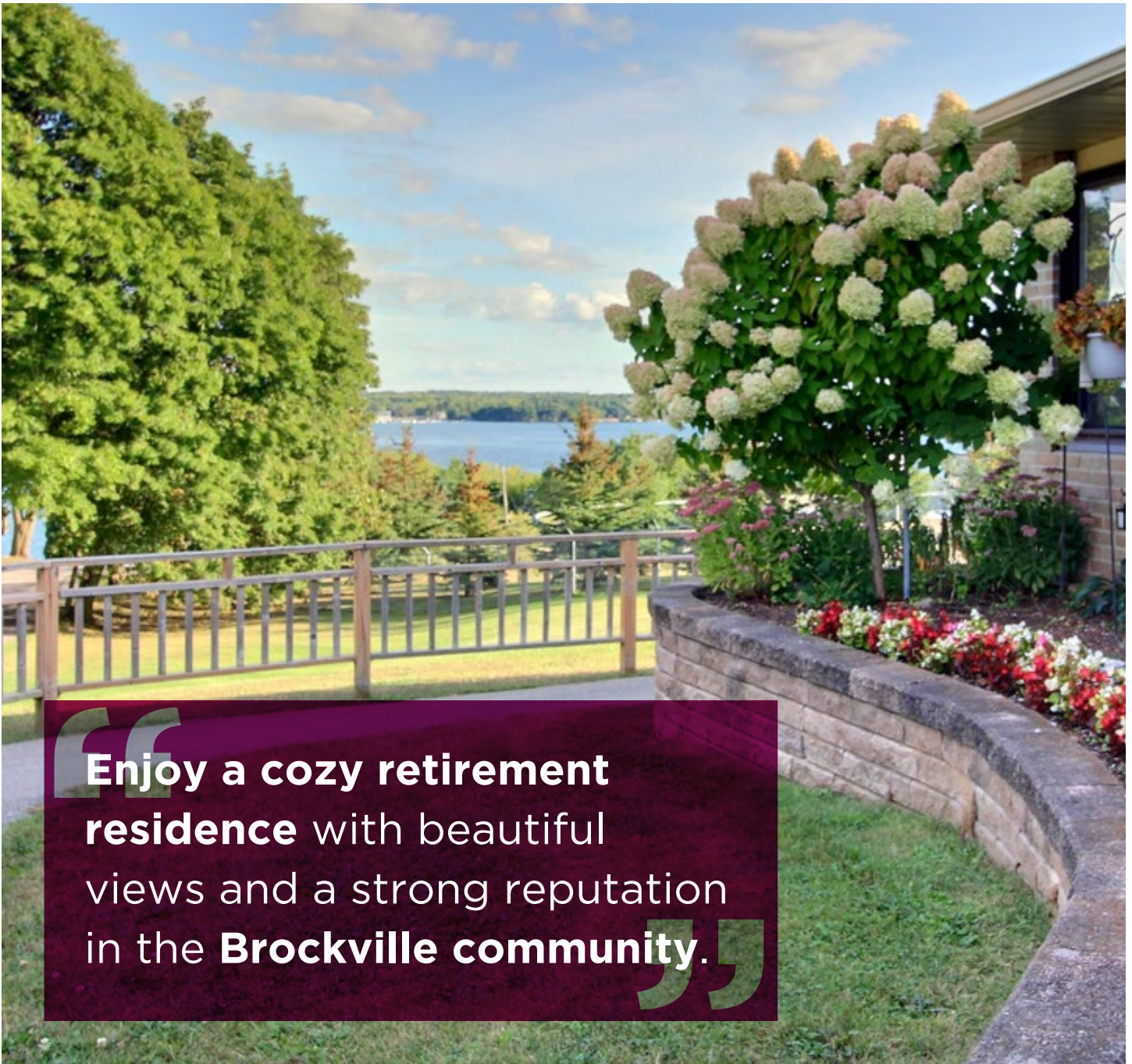




CHARTwell
ROSEDALE
retirement residence



making people's lives **BETTER**



“Enjoy a cozy retirement residence with beautiful views and a strong reputation in the **Brockville community.**”

PART OF OUR LOCAL COMMUNITY SINCE 1984

Chartwell Rosedale is a bungalow-style independent supportive living retirement residence overlooking the St. Lawrence River in Brockville. Our single-story design makes all our amenities accessible—from our dining room to our peaceful courtyard. We’re well-known in our local community for delivering that “at-home” feeling, thanks to caring staff and cozy suites.

Here, you can enjoy the convenience of downtown Brockville without the bustle of city living, as

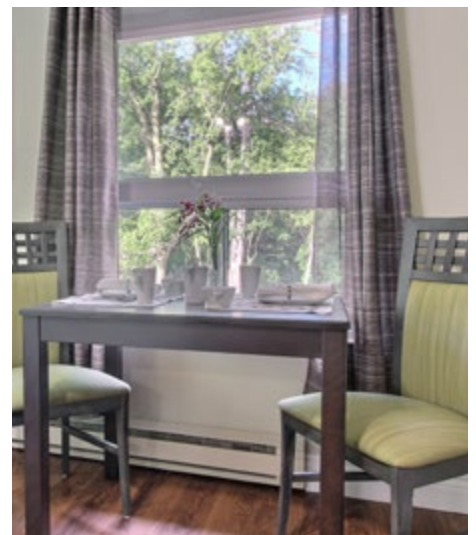
well as easy access to Highway 2 and Highway 401. Experience the views of the St. Lawrence River, or explore nature by visiting a variety of nearby parks, such as Ferguson Falls. You can even take your furry friend to the Brockville Dog Park! Hobbyists and shoppers alike will appreciate the proximity of specialty shops, as well as 1,000 Islands Mall. Brockville General Hospital is also just a few minutes away, as well as local pharmacies.

OUR UNIQUE LIFESTYLE

You might already be familiar with Chartwell Rosedale from meeting one of our resident ambassadors. Our tight-knit community has an intimate, small-town feeling, where you can participate in engaging social experiences, such as trivia night, book exchanges and our knitting club. Perhaps you'll also find yourself appreciating the flowers along the walking path that surrounds our residence, or planting some of your own in our beautiful garden.

Whether you prefer a charming studio or a spacious one-bedroom suite—some with two washrooms—you'll be treated to three tasty and nutritious meals. Live worry free while we take care of your housekeeping and laundry too. And if your needs change, our services can adapt with you! We can help with medication management, changes in your daily routine and much more so you can focus on the people and pursuits most important to you in your retirement years.

Explore our Living at Chartwell brochure to learn more about dining, lifestyle activities and personalized care services.



FACTS & FEATURES



IN THE NEIGHBOURHOOD

- Pharmacies
- Places of worship
- Post offices
- Restaurants
- Dentists
- Government offices
- Banks
- Museums
- Lawn bowling

ACTIVITIES

- Educational activities
- Day trips*
- Book club
- Social and recreational programs
- Exercise
- Crafts
- Billiards
- Live entertainment
- Pet visits

DINING SERVICES

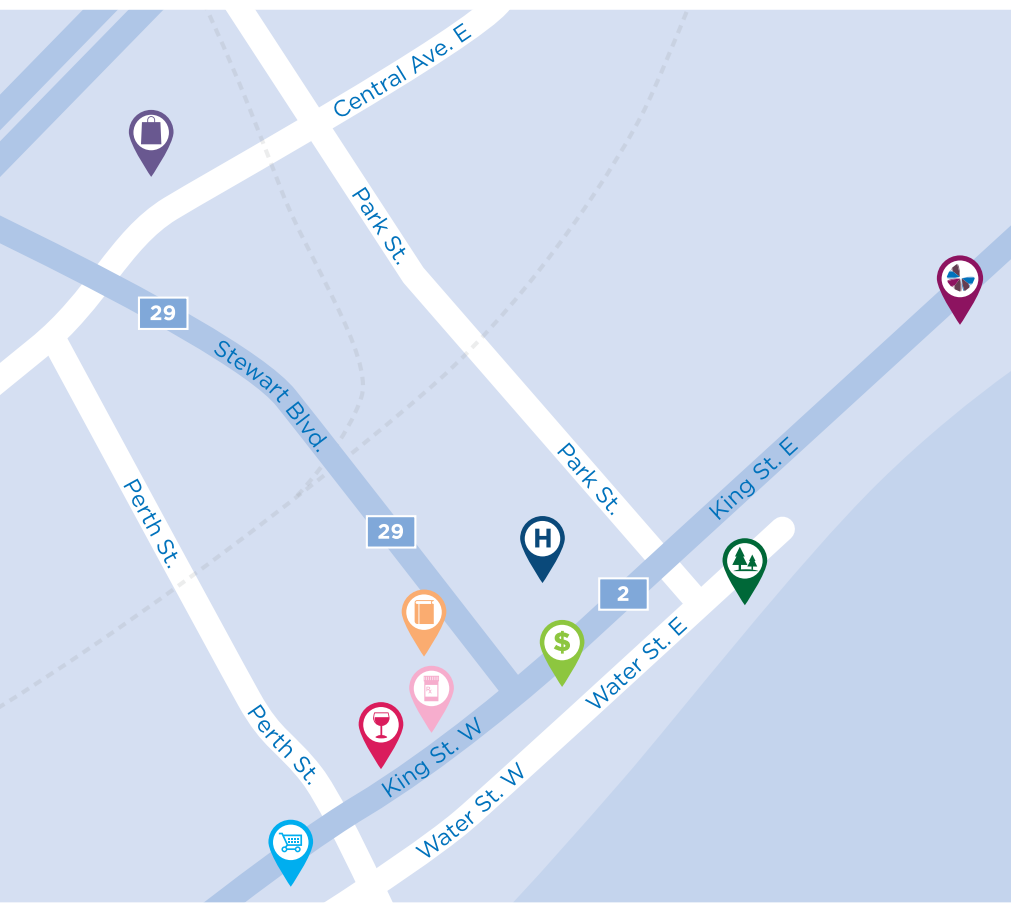
- Diversified menu
- Meals for guests*
- Freshly-prepared snacks

CARE SERVICES

- Medication supervision/administration*
- On-site Nurse
- Lab services*
- Assistance with activities of daily living*
- Visiting Physician*
- Care Assist Program
- On-call Nurse
- Vitals monitored*

AMENITIES

- Dining room
- TV room
- Walking paths
- Activity room
- Multi-functional room
- Outdoor greenspace
- Personal mailbox
- Lounge



-  Grocery store
-  Shopping
-  Liquor store
-  Bank
-  Pharmacy
-  Library
-  Hospital
-  Park

CHARTWELL ROSEDALE

1813 County Road 2 East, RR 1, Brockville, ON K6V 5T1 • 613-499-9983