



CHARTwell

DUKE OF  
DEVONSHIRE  
retirement residence



making people's lives BETTER



**Reputable retirement community**  
offering personalized services  
and an atmosphere **celebrating**  
**British traditions.**

## PART OF OUR LOCAL COMMUNITY SINCE 2009

Chartwell Duke of Devonshire is situated in Ottawa's desirable Island Park/Civic Hospital neighbourhood and boasts gorgeous views of the Experimental Farm and Gatineau Hills. Our friendly, trained staff are dedicated to attending to your needs with a lifestyle emphasizing convenience, privacy and well-being.

Rich wood paneling, coffered ceilings, gilded portraits, warm fabrics, classic décor that speaks

of enduring British traditions—you'll appreciate the thought and care that has gone into our turn-of-the-century design. We take great pride in our attention to detail, reflected in the smallest of touches, including fresh floral arrangements on our dining tables. Presentation is important to us, as is delivering a customer service experience that exceeds your expectations.

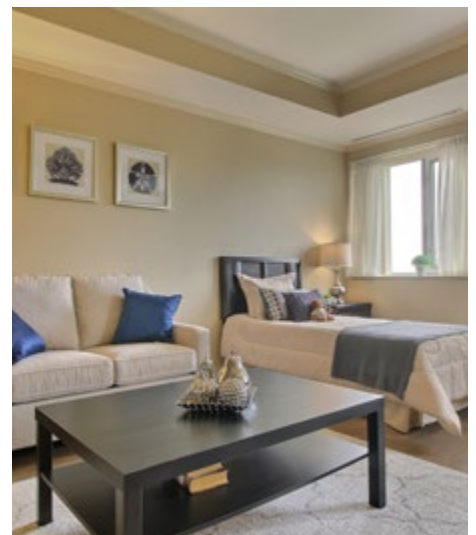


## OUR UNIQUE LIFESTYLE

Freshly-brewed coffee served in the piano lounge; a manicure service in the Duke of Devonshire Spa; a classic Hollywood movie in our large-screen theatre with custom seating—the complement of services and amenities offered at Chartwell Duke of Devonshire are there to enhance your well-being and enrich your lifestyle. With the refined tastes of our residents in mind, we love to hold cocktail socials, speaker series featuring prominent authors and politicians, and outings in Ottawa via our town car.

Here, you'll savour delicious and nutritious meals prepared by our Executive Chef and served in our wood-paneled dining room, where you can socialize with your companions and indulge in a glass of wine while taking in views of Ottawa. You'll also benefit from conveniences like weekly housekeeping, independent supportive living or assisted living care services and well-appointed suites designed for your comfort and relaxation.

**Explore our Living at Chartwell brochure to learn more about dining, lifestyle activities and personalized care services.**



# FACTS & FEATURES



## IN THE NEIGHBOURHOOD

- Grocery stores
- Pharmacies
- Shopping
- Restaurants
- Hospital
- Medical clinics
- Banks
- Transit
- Coffee shops

## ACTIVITIES

- LiveNow program
- Educational activities
- Cultural activities
- Social and recreational programs
- Day trips\*
- Exercise
- Live entertainment
- Guest speakers

## DINING SERVICES

- Diversified menu
- À la carte menu
- Open-seating dining
- Flexible dining times
- Themed dinner\*
- Meals for guests\*
- Freshly-prepared snacks

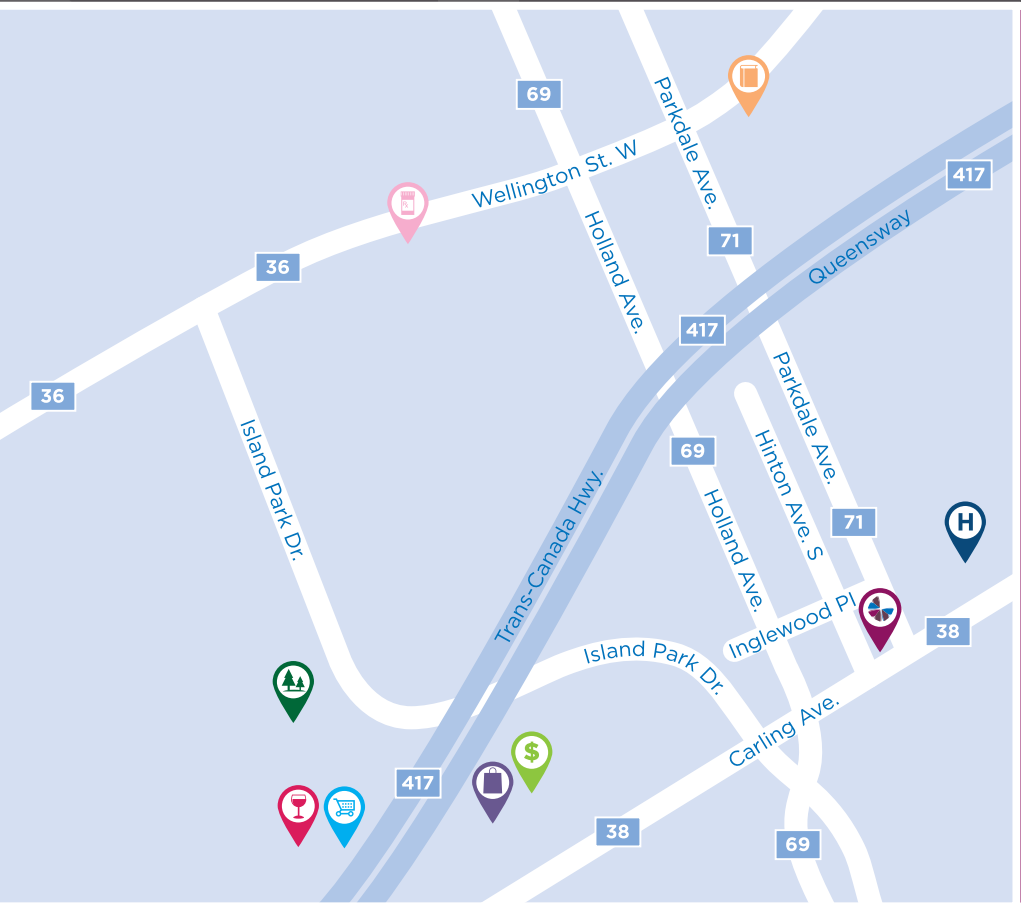
## CARE SERVICES

- Medication supervision/administration\*
- Assistance with activities of daily living\*
- On-site Nurse
- Pharmacy
- Physiotherapy\*
- Care Assist Program
- Visiting Physician\*
- Vitals monitored\*

## AMENITIES

- Dining room
- Private dining room
- Activity room
- Fitness room
- Movie theatre
- Bistro/cafe
- Library
- Lounge
- Spa

\*Fee-for-service may apply.



-  Shopping
-  Grocery store
-  Liquor store
-  Bank
-  Pharmacy
-  Library
-  Hospital
-  Park

**CHARTWELL DUKE OF DEVONSHIRE**

1095 Carling Avenue, Ottawa, ON K1Y 4P6 • 613-688-1883