



CHARTwell
REGENCY
retirement residence



making people's lives **BETTER**



Port Credit's best-kept secret for supportive, lakeside retirement living.

PART OF OUR LOCAL COMMUNITY SINCE 2003

With stunning lakefront views, Chartwell Regency is an intimate, boutique-style retirement community well situated in a prestigious Port Credit neighbourhood. With its quaint village setting and harbour on Lake Ontario, Port Credit offers something for everyone, including a wide array of restaurants, coffee shops, retailers, grocery stores, places of worship, and an iconic lighthouse—many within easy walking distance.

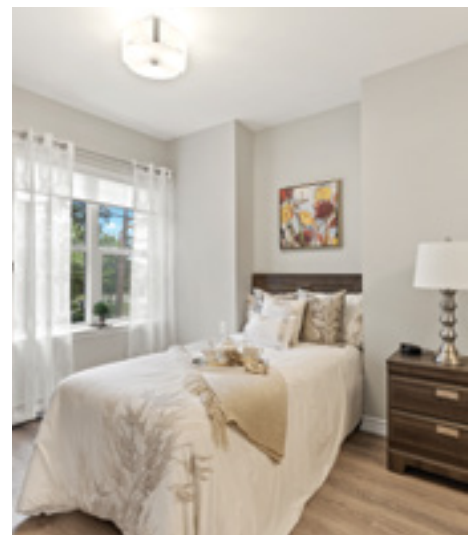
Offering an independent supportive living lifestyle, our retirement home is well-known for providing a friendly, welcoming atmosphere defined by a sense of belonging and a strong community of residents and staff. Here, you'll have the option to choose from spacious and bright studio, one- or two-bedroom suites featuring large windows where you can indulge in lakefront views.

OUR UNIQUE LIFESTYLE

At Chartwell Regency, you can rest easy knowing that you live in a safe, worry-free setting where you can pursue the lifestyle you want. In addition to three delicious and nutritious daily meals, housekeeping, and flexible care services, we provide a range of engaging recreational experiences designed to keep you engaged, active and entertained.

Inside, you'll find our friendly community of residents loves to have fun and enjoy our many experiences, including our Happy Hours, pub night, exercise classes, live entertainment, and bus outings around Port Credit. If desired, we also offer private chauffeur services for appointments or shopping. And don't forget our beautiful outdoor garden, where you can plant flowers or vegetables. It's no wonder that our residents are proud to call us home!

Explore our Living at Chartwell brochure to learn more about dining, lifestyle activities and personalized care services.



FACTS & FEATURES



IN THE NEIGHBOURHOOD

- Grocery stores
- Pharmacies
- Shopping
- Restaurants
- Hospital
- Medical clinics
- Banks
- Transit
- Coffee shops

ACTIVITIES

- LiveNow program
- Educational activities
- Cultural activities
- Social and recreational programs
- Day trips*
- Exercise
- Live entertainment
- Billiards
- Piano

DINING SERVICES

- Diversified menu
- Meals for guests*
- Flexible dining times
- Freshly-prepared snacks
- À la carte menu
- Catering*

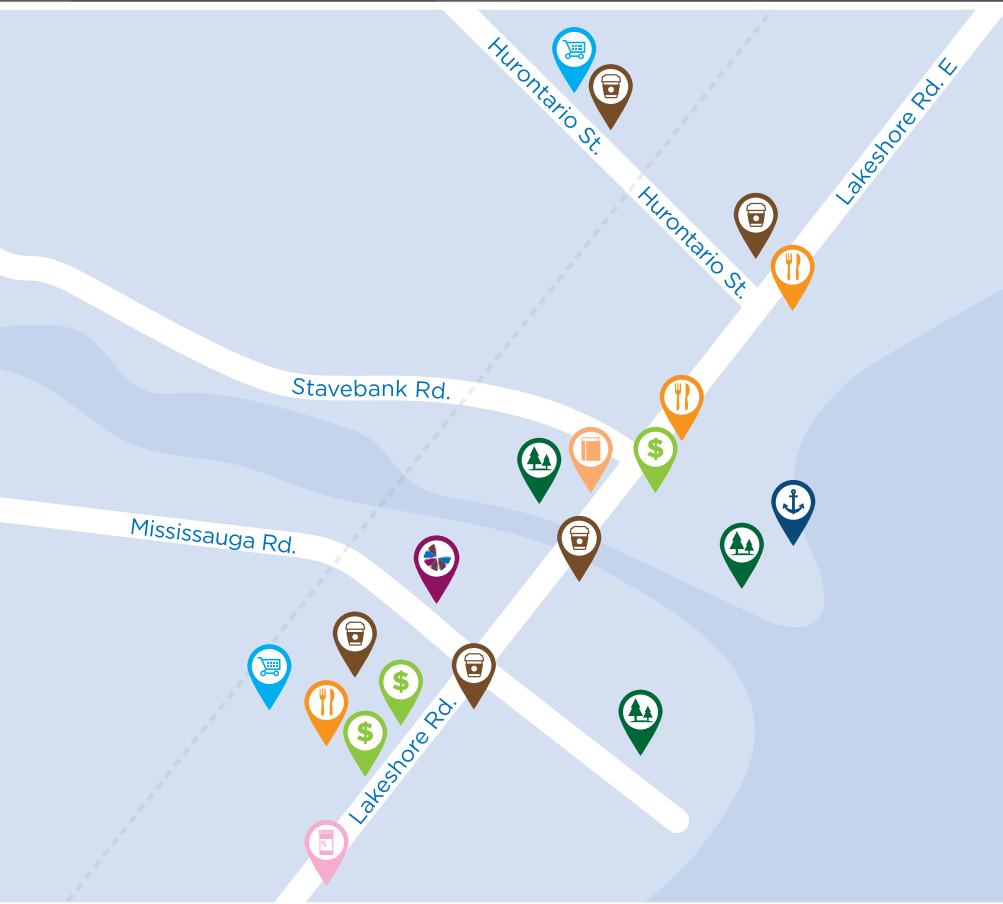
CARE SERVICES









- Medication supervision/administration*
- Physiotherapy*
- On-site Nurse
- Assistance with activities of daily living*
- CareRx Pharmacy
- Esthetician services*
- Occupational therapy*
- Care Assist Program
- On-call Nurse

AMENITIES

- Dining room
- Private dining room
- Bar/lounge
- Bistro/cafe
- Pub
- Activity room
- Fitness room
- Movie theatre
- TV room

*Fee-for-service may apply.



-  Restaurant
-  Grocery store
-  Bank
-  Coffee shop
-  Pharmacy
-  Library
-  Park
-  Harbour

CHARTWELL REGENCY

29 Mississauga Road North, Mississauga, ON L5H 2H7 • **289-643-1995**