



**CHARTwell**  
**RIVERSIDE**  
retirement residence



making people's lives **BETTER**



Experience **worry-free retirement living** in an intimate setting devoted to your happiness and wellness.

## PART OF OUR COMMUNITY SINCE 2006

Chartwell Riverside is an inviting retirement residence with traditional charm offering a social and supportive community lifestyle in West London. The personality of our home is often described as energetic and inclusive, thanks to our lively residents and tenured staff who promote an atmosphere of fun and fulfilment. Our all-inclusive lifestyle, excellence in care and dedicated staff who come to know you well so they can anticipate your needs have earned us a strong reputation in our local community.

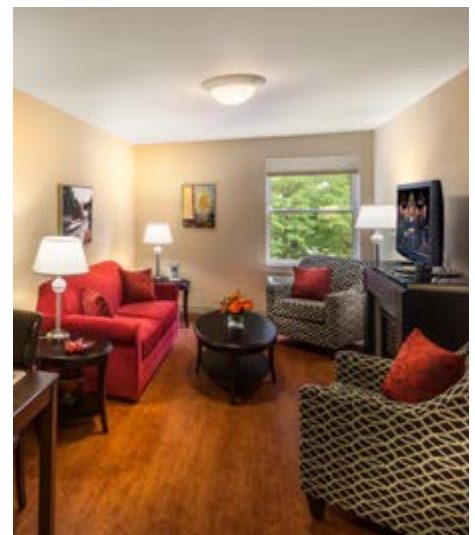
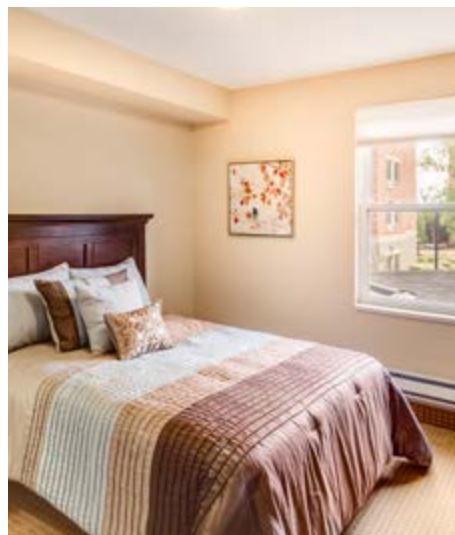
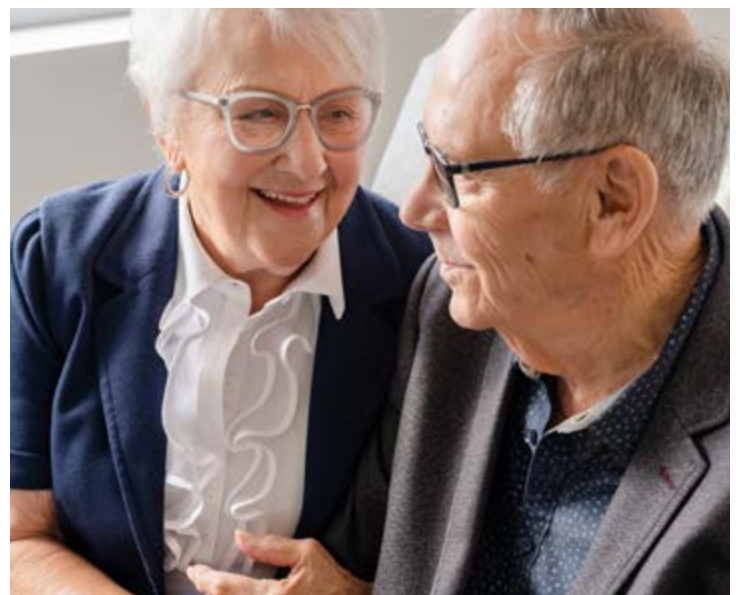
You'll find we are close to everything—like shopping malls, restaurants, grocery stores, medical services, and transit in downtown London—yet tucked away from it all in a family-friendly neighbourhood. Surrounded by mature trees, landscaped gardens, and a picturesque gazebo, you'll feel relaxed and close to nature at our residence, and may even find yourself enjoying a stroll along the nearby Thames River or glimpsing some local wildlife.

## OUR UNIQUE LIFESTYLE

We offer an impressive array of amenities that can enhance your lifestyle, including our main and private dining rooms, a fitness room, library, salon and spa, greenhouse, and crafts room. Additionally, you'll often find our residents enjoying our popular Rhythm 'n' Moves exercise classes, card tournaments, guest speakers, day trips and our much-anticipated live entertainment. With so many natural ways to connect each day, it's easy to make new friends—and connect with old ones—while our staff take care of the rest.

Here, you can choose from spacious and well-appointed studio, one-bedroom, and one-bedroom-plus-den retirement suites to call home in our main residence. Uniquely, we also have open-concept townhomes that include a spacious bedroom and den, a full kitchen equipped with a fridge, stove, microwave and dishwasher, a well-appointed bathroom, in-suite laundry facilities and 24-hour emergency response services.

**Explore our Living at Chartwell brochure to learn more about dining, lifestyle activities and personalized care services.**



# FACTS & FEATURES



## IN THE NEIGHBOURHOOD

- Grocery stores
- Shopping
- Banks
- Pharmacies
- Places of worship
- Community centres
- Parks
- Libraries
- Transit

## ACTIVITIES

- LiveNow program
- Social and recreational programs
- Day trips\*
- Live entertainment
- Exercise
- Gardening
- Crafts
- Billiards
- Piano

## DINING SERVICES

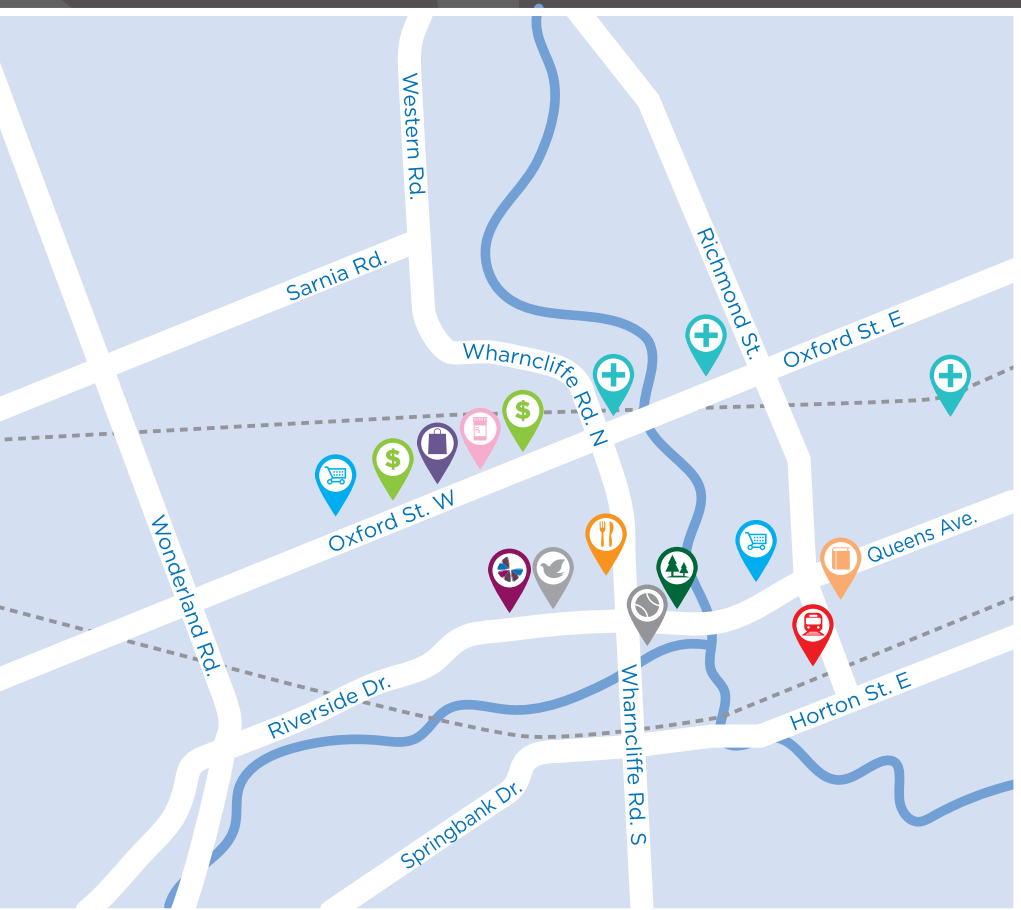
- Diversified menu
- Special diets accommodated
- À la carte menu
- Freshly-prepared snacks
- Meals for guests\*
- Catering\*





## CARE SERVICES

- Medication supervision/administration\*
- Care Assist Program
- Visiting Physician\*
- Assistance with activities of daily living\*
- Physiotherapy\*
- Esthetician services\*
- Vitals monitored\*
- Oxygen service\*
- Blood pressure clinic\*

## AMENITIES

- Dining room
- Private dining room
- Bistro/cafe
- Country kitchen
- Activity room
- Fitness room
- Library
- Movie theatre
- Walking paths



-  Grocery store
-  Bank
-  Shopping
-  Restaurant
-  Medical clinic
-  Pharmacy
-  Library
-  Place of worship
-  Transit
-  Community centre
-  Park

### CHARTWELL RIVERSIDE

201 Riverside Drive, London, ON N6H 1E5 • 226-667-8062