



making people's lives BETTER[®]



PART OF THE LOCAL COMMUNITY SINCE 1988

Chartwell Van Horne is a wonderful choice for active, independent seniors looking for gracious and friendly small-town retirement living. Within walking distance of Smiths Falls' historic downtown, we offer updated studio and one-bedroom suites, some featuring kitchenettes, as well as walk-out balconies or private patio space. With so many spacious layouts to choose from, we comfortably cater to both individuals and couples looking for a relaxing, yet engaging place to call home.

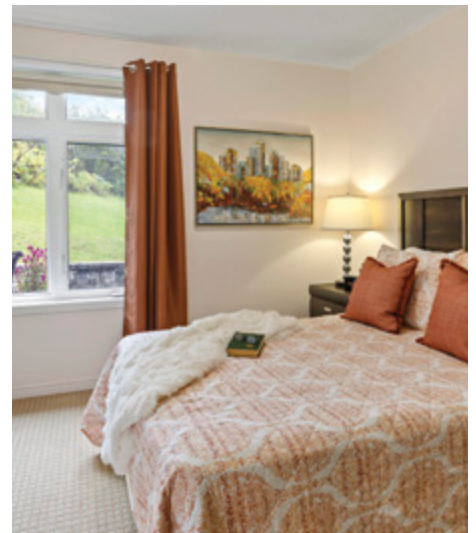
In addition to comfortable private accommodations, you can expect to benefit from daily homemade meals incorporating fresh and flavourful ingredients, housekeeping, optional social and leisure experiences, as well as a variety of personal care services. Our personalized services are meant to complement your existing lifestyle and offer flexibility and choice so you can decide what aspects of daily life you want assistance with.

OUR UNIQUE LIFESTYLE

One of the most appreciated aspects of life at Chartwell Van Horne is our pretty outdoor courtyard, where our residents love to gather, socialize or simply enjoy some fresh air. We often enjoy wildlife sightings like deer and different species of birds, making our residence feel integrated with our natural surroundings.

The open-concept, bungalow-style layout of our residence also makes it a conducive setting for social gatherings and lifestyle experiences. Here, you have easy access to our bright dining room, where you can enjoy a delicious meal served tableside, a beautiful library for quiet enjoyment or a meeting of the book club, a lively bistro where coffee, tea and snacks are served, and much more. Our population of residents is very active and engaged, which is why you may find yourself enjoying card and poker nights, current events discussions, Bible reading study and much more alongside new friends.

Explore our Living at Chartwell brochure to learn more about dining, lifestyle activities and personalized care services.



FACTS & FEATURES



IN THE NEIGHBOURHOOD

- Grocery stores
- Pharmacies
- Shopping
- Restaurants
- Hospital
- Banks
- Places of worship
- Parks
- Seniors centres

ACTIVITIES

- LiveNow program
- Educational activities
- Day trips*
- Social and recreational programs
- Live entertainment
- Guest speakers
- Book club
- Crafts

DINING SERVICES

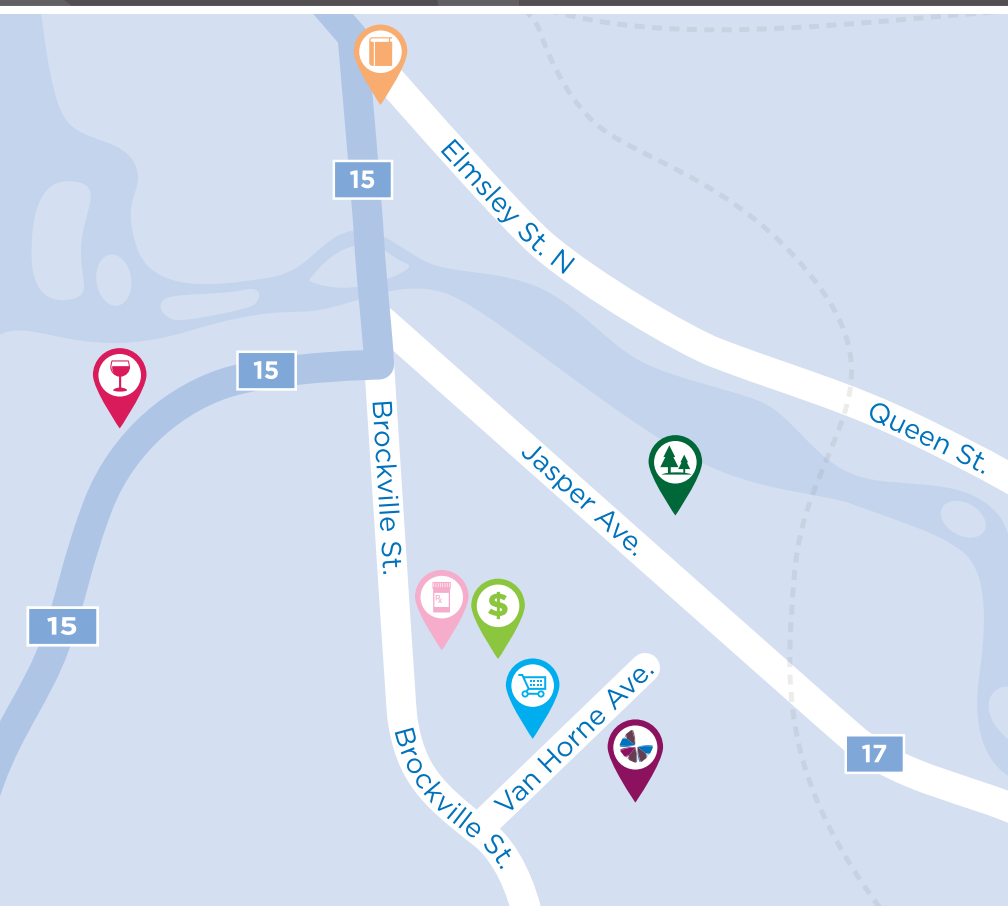
- Flexible dining times
- Meals for guests*
- Freshly baked snacks







CARE SERVICES

- Medication supervision/administration*
- Assistance with activities of daily living*
- On-call Nurse
- On-site Nurse
- Pharmacy
- Physician visits*
- Vitals monitored*
- Blood pressure clinic*

AMENITIES

- Dining room
- Activity room
- Wellness centre
- Bistro/cafe
- Library



-  Bank
-  Grocery store
-  Library
-  Liquor store
-  Park
-  Pharmacy

CHARTWELL VAN HORNE

25 Van Horne Avenue, Smiths Falls, ON K7A 5L2 • 613-706-2184