

**CHARTwell**

**RIDGEPOINTE**

retirement residence

1789 Primrose Crescent, Kamloops  
778-376-2003

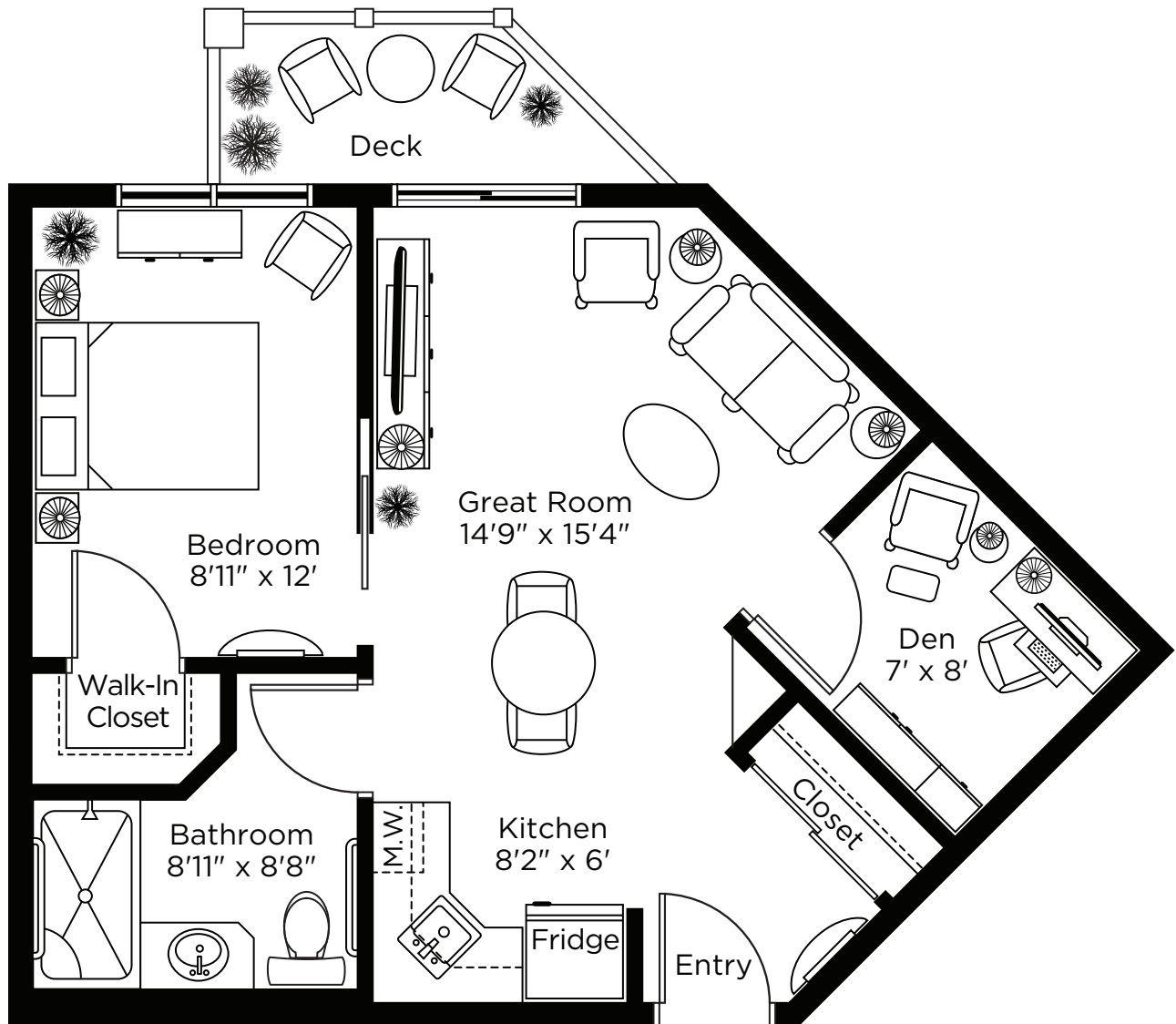
# Suite Plans

## ONE BEDROOM

ALL ILLUSTRATIONS ARE ARTIST'S CONCEPT PLANS AND SPECIFICATIONS MAY CHANGE WITHOUT NOTICE.  
ACTUAL USABLE FLOOR SPACE MAY VARY FROM STATED FLOOR AREA. E & O.E.

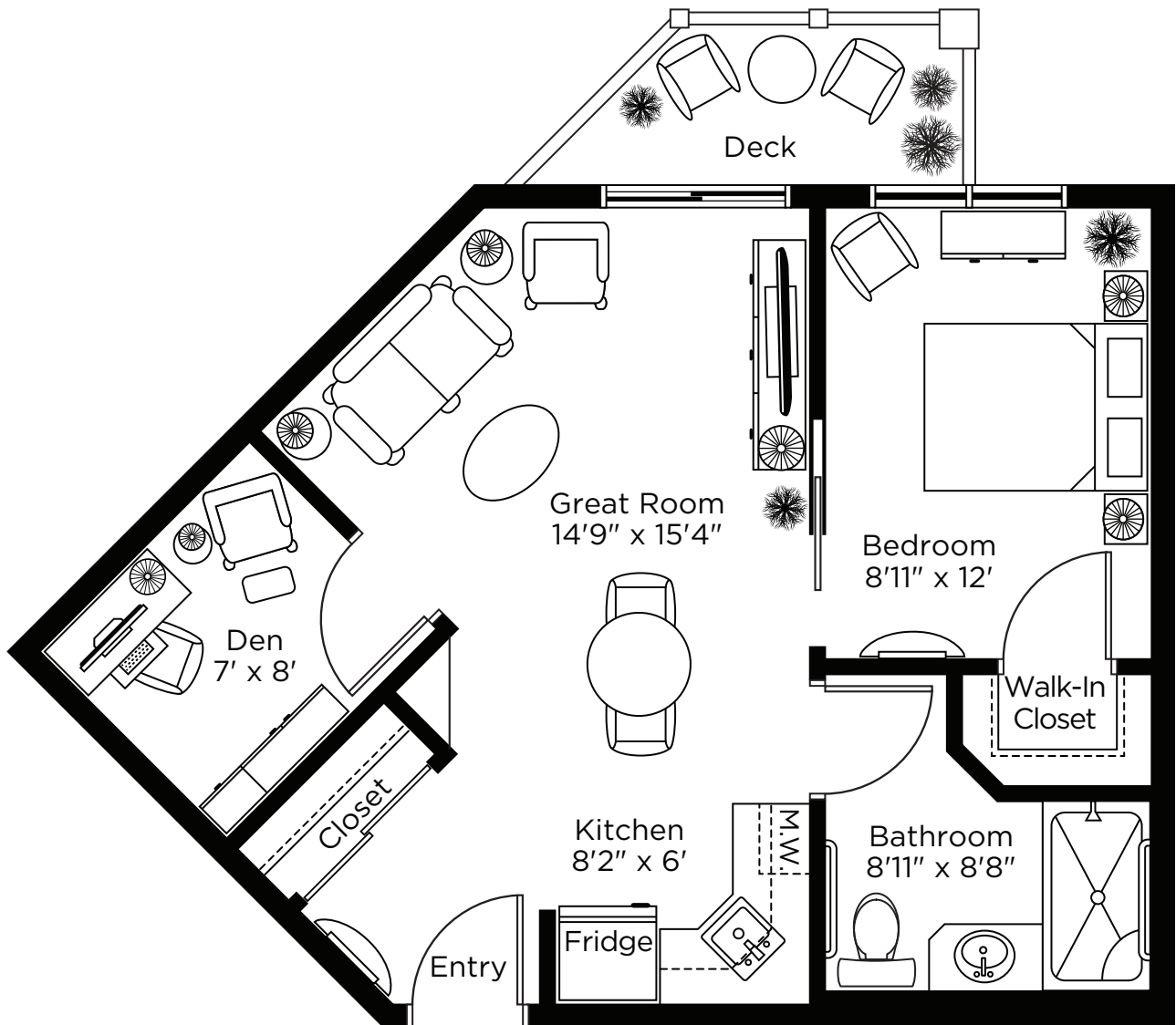
# Unit E One Bedroom

558 sq.ft.



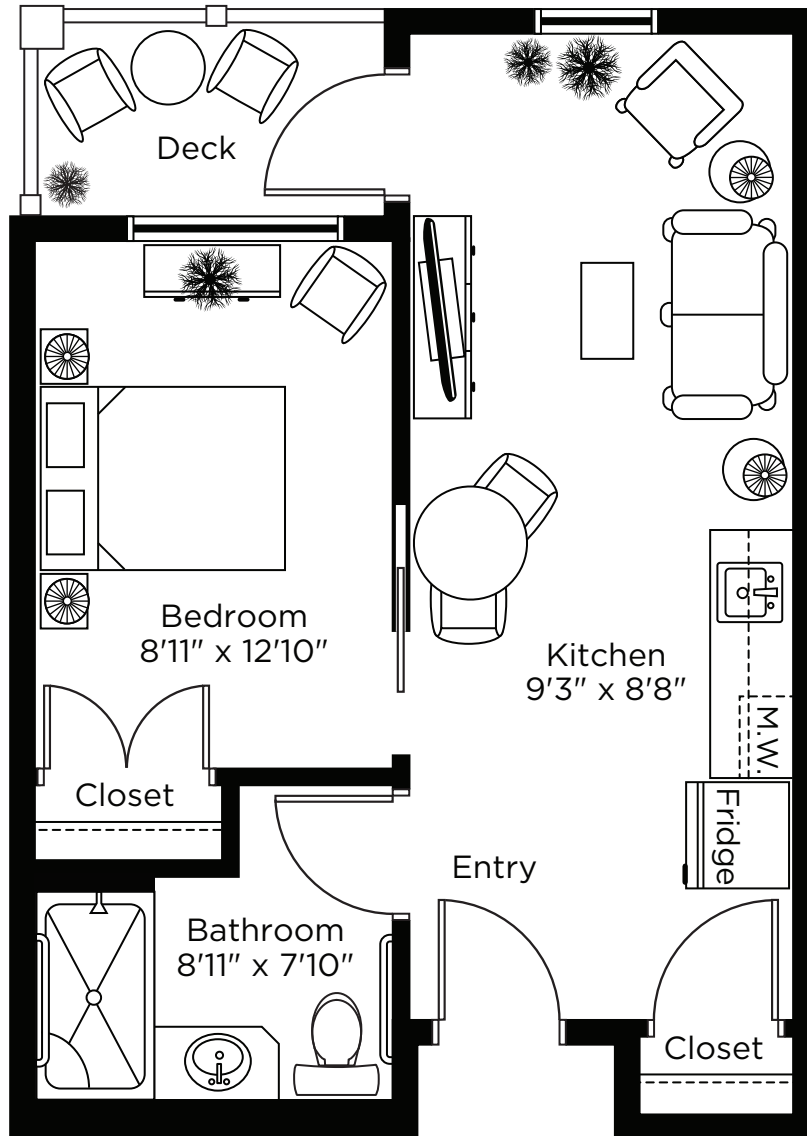
# Unit E2 One Bedroom

558 sq.ft.



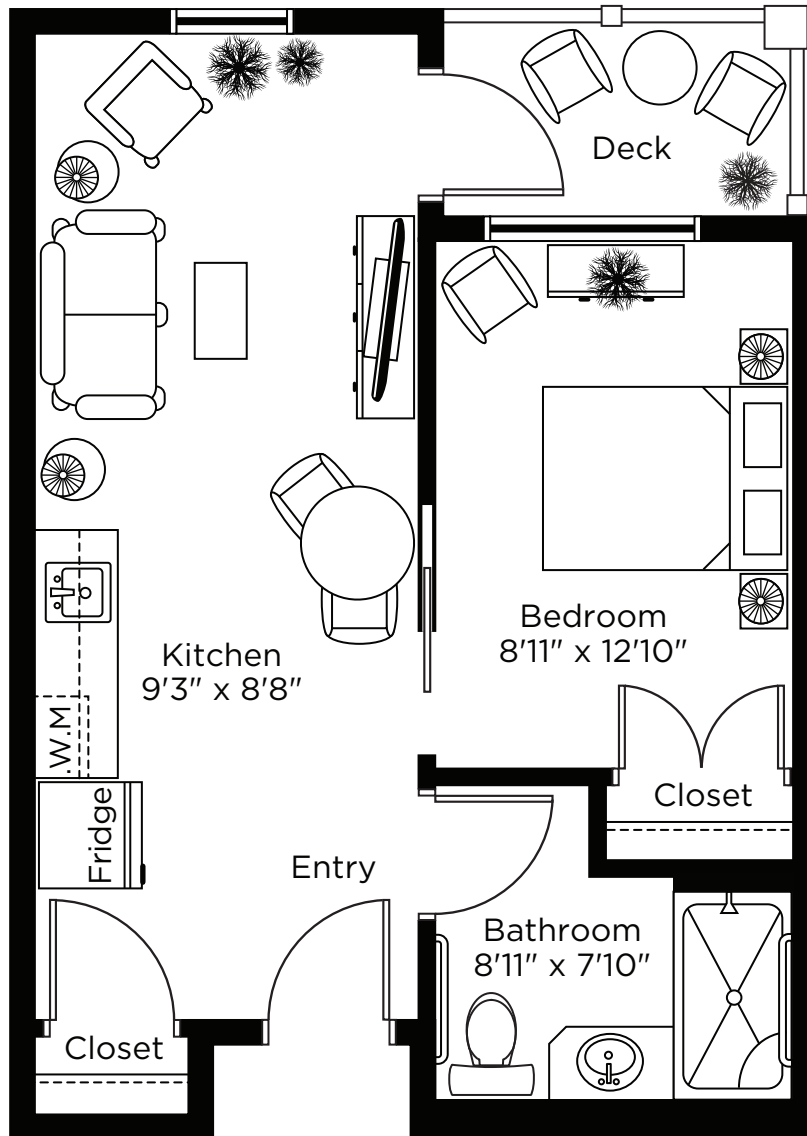
# Unit F One Bedroom

463 sq.ft.



# Unit F2 One Bedroom

463 sq.ft.



ALL ILLUSTRATIONS ARE ARTIST'S CONCEPT PLANS AND SPECIFICATIONS MAY CHANGE WITHOUT NOTICE.  
ACTUAL USABLE FLOOR SPACE MAY VARY FROM STATED FLOOR AREA. E & O.E.